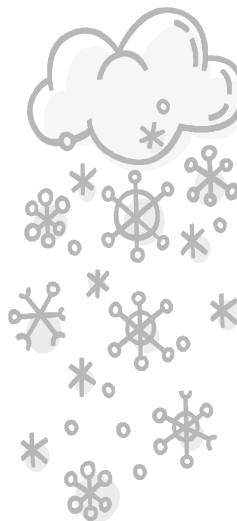


## Unit Game Quarterly Jackpot Series

Tired of the same old, same old at your Thursday night Unit Game?! Beginning in 2004, the NVBA will offer a new twist to our weekly competition at Beth El Hebrew Congregation, site of our Unit Game. Cash awards will be given to those players who achieve the three highest percentage games in Flights A, B and C at the unit game during any one calendar quarter. The first winners will be announced on April 1<sup>st</sup> for the first quarter of 2004. The prize for achieving the three highest percentage games in Flight A/ Flight B/and/or Flight C is \$50. The top ten players in each category will be updated and posted on the NVBA web site after each

*(Continued on page 7)*



### Inside this issue:

President's Message	2
Calendar of Events	3
Jack of Hearts	5
System Building	10
Parade of Winners	17
NOVA Club Listing	24
Tournament Ads	25

### Of Special Interest:

- ◆ NVBA Sectional February 19-22
- ◆ NVBA Sectional April 22-25
- ◆ With this issue, the newsletter goes to a quarterly publication schedule.

## Presidents' Message

by Leo Cardillo



The NVBA fiscal year begins on 1 May, but I can't resist the lure of the 'New' calendar year as I consider the months ahead and the opportunities to work with your Board to improve the bridge-playing enjoyment of our members! So let me get a jump on the resolutions for the New Year and talk about some of the current actions that are being taken to meet the goals of the NVBA. As a reminder, I proposed four goals for the NVBA a few newsletters ago, to include (1) increased quality and quantity (table count) of bridge play at the Unit Game and Sectionals, (2) a balanced budget, (3) close cooperation with the WBL and (4) appropriate support to District 6, the MABC and the ACBL.

*"...Increasing the quality and quantity of bridge play at the Unit Game and Sectionals is vital to the continued growth and well-being of the NVBA"*

Increasing the quality and quantity of bridge play at the Unit Game and Sectionals is vital to the continued growth and well-being of the NVBA. Currently, the Board has renegotiated a two-year lease for the Beth El facility which ensures that the NVBA has a quality place to play the Unit Game while maintaining a very reasonable cost basis. In addition, the Board has approved a "continuous pairs" competition which will run quarterly and provide cash prizes for the winners. Details will be available on the NVBA website ([www.nvba.org](http://www.nvba.org)) and in handouts at the Unit Game (see cover page article).

Further, in an effort to encourage the return of players who have not played in the Unit game in over six months time, the Board approved a plan to award a future free play to the returning member and an entry fee discount to any regular playing member who accompanies the

*(Continued on page 4)*

### Upcoming NVBA Games & Special Events

Jan 15	Beth El	7:00	Stratified Unit Championship
Jan 22	Beth El	7:00	Stratified GNT
Jan 24	KOCH	7:00	Special GNT Qualifier
Jan 29	Beth El	7:00	Strati-flighted Unit Championship
Feb 5	Beth El	7:00	Strati-flighted Junior Fund Pairs
Feb 12	Beth El	7:00	Stratified GNT
Feb 19	Beth El	7:00	NVBA Sectional (AT THE TEMPLE)
Feb 26	Beth El	7:00	Stratified District 6/Club STaC
Mar 4	Beth El	7:00	WBL Sectional
Mar 11	Beth El	7:00	Strati-flighted District 6 Charity
Mar 18	Beth El	7:00	Strati-flighted Unit Championship
Mar 25	Beth El	7:00	Stratified Club Championship
Apr 1	Beth El	7:00	Strati-flighted Unit Championship
Apr 8	Beth El	7:00	Strati-flighted Membership Game

#### Stratification Limits:

For regular NVBA Unit Games:

Stratified games: A is unlimited, B is 0-2000, and C is 0-500.

Strati-flighted games: A/X is 3000+/0-3000, B/C is 0-2000/0-500

For the GNT qualifying games, the stratifications are:

C is NLM (0-500), B is 0-2000, and A is unlimited.

### 2004 Sectional Schedule

N V B A	February 19-22	W B L	January 8-11
	April 22-25		March 4-7
	September 9-12		July 29- August 1
	October 21-24		September 30–October 3

*(Continued from page 2)*

returning player.

Finally, the NVBA has informally adopted a policy of a "Guaranteed Partner (GP)" for the Unit game and Sectionals. Norma Pierzchala proposed this idea to me shortly after I was elected President. At the time, I knew it was a good idea and made a note to get it started. About the same time, Jean Mayo was helping Pete Hughes (NVBA Partnership Chair) and was also willing to support the GP program. Without any fanfare, Jean and I have been keeping our bridge dates open as necessary to guarantee that one of us would be available to play with any person needing a partner. The November Sectional, including the Sunday Swiss, worked without a hitch. Subsequent Unit Games all worked to a tee! The acid test came with the GNT Qualifier, a night when 22 teams participated and TEN of the teams were 'assembled' on the spot!! To ensure success, I had asked a few other players to be available, just in case I needed as many as three players to 'team' with a single. When the dust settled, every player was accommodated! More than I could have expected, the GP program has worked well and has been a lot of fun. I enjoy

the opportunity to 'guarantee' a member's bridge playing enjoyment, and I also enjoy the opportunity to meet and play with our various members.

As we move forward, I would like to have the names of a few additional volunteers who would be willing to participate as necessary. A few C and B level volunteers would ensure that I can make the GP program meet the playing needs of our members more exactly, and also account for those few nights when Jean or I might not be available. Let me know if you are interested in helping out. I can always be reached at 703-868-6868 or via email at 'cardillo@bellatlantic.net'.

The NVBA budget will be balanced each year to ensure the long-term viability of the Unit. Recent years have generated some net income, but I will continue to work with the Board to strengthen the budget process and improve the probability of a small net surplus in each year. Expenses will be closely watched and some increase in playing fees may be necessary. In addition, the Board will continue to carefully monitor the use of 'free plays,' both as awards and as token

*(Continued on page 9)*

## The Jack of Hearts

by Marshall Kushner

If you arrive in New Orleans on a Saturday night, you get the idea before you reach your hotel. The folks in black tie or blue jeans, walking the streets carrying glasses of their favorite libation let you know that this is a party town. Such was the scene for the 2003 Fall NABC, played at the Marriott on the western edge of the French Quarter. Walk a block east into the Quarter and you will find yourself in a unique enclave filled with wonderful restaurants and storefront bistros featuring a wide variety of entertainment, musical and otherwise. Even watching the passing parade can be interesting. I saw one fellow stumbling along Bourbon St. in a T-shirt with blurred lettering that proclaimed "I'm home. Take me drunk." Strangely, for a place that parties well into the night, none of the eateries remain open late. I went out in search of a bowl of gumbo one night and had to settle for a slice and a beer. I ended up paying for it twice, if you catch my drift. Undaunted, I spent my last day in the Big Easy cramming for my exam on Creole cuisine.

Just as parents tire of children asking why the sky is blue, the ACBL must tire of players asking why Fall nationals are held across Thanksgiving. The same thing happens every year. The tournament goes great guns for the first five days and then dies because folks want to be with family on the holiday. Even bridge players. This year was a little different. It was worse. Not only did the tournament suffer Thanksgiving attrition, it suffered from...drum roll, please...the Bayou Classic. If you've never



*"...the ACBL must tire of players asking why Fall nationals are held across Thanksgiving...tournament goes great guns for the first five days and then dies because folks want to be with family on the holiday"*

*(Continued on page 6)*

*(Continued from page 5)*

heard of it (I hadn't), it's the annual football game between Grambling and Southern U. It's held on Thanksgiving weekend and each year thousands of frenzied football fans invade the city. So frenzied were they that downtown hotels barricaded their entrances to ensure their guests' safety. Brightly colored wristbands were issued to registered guests for in-and-out privileges, leaving us feeling like we were under house arrest. Even worse was the problem of players staying elsewhere, but that's another story. The locals solved the problem by simply not showing up and who could blame them. There was virtually no way to get to the site. You couldn't drive, much less park, and public transportation was as bad. You couldn't even walk on Canal Street. One player claimed it took her twenty minutes to walk one block. Suffice it to say that attendance for the final three days fell 1000 tables short of the expected drop off.

Inside Ft. Marriott, Jeff Roman's team, after being in the faces of the world's finest for three days, finished an enviable 8th in the Reisinger

Board-a-Match team event. Jeff was the only NVBA player to place in the finals of the Reisinger, and he and Alan Sontag were the only two District 6 players to finish in the finals of one of duplicate bridge's toughest events. National overalls were also garnered by Cecily Kohler (LM Women's Pairs, Women's BAM, and North American Swiss), Lee De Simone (Women's LM Pairs and Women's BAM), Ai-Tai Lo and Alan Schwartz (Blue Ribbon Pairs and North American Swiss), and Bobby Gookin (Blue Ribbon Pairs). Regional events were won by Rusty Krauss (Bracketed KO) and Tom Cogan (Stratified Pairs). Even the Jack of Hearts got into the act, winning an A/X Pairs with Don Geerhart and a Side Series with the Queen of Hearts.

When it was over, a lady in a window seat was heard to exclaim, "Wow! No wonder they call it the Mighty Mississippi!". No one had the heart to tell her it was Lake Pontchartrain.



*(Continued from page 1)*

unit game. A complete listing will be available at the unit game. Awards will be made at the conclusion of each calendar quarter.

A summary of the detailed rules posted on the NVBA web site follows:

1. Only percentages earned in "regular" unit game pairs events will be counted.
2. A player's Flight is not determined by the number of master points held but by the Flight he plays in on a given evening. On nights the event is stratiflighted, the players with the highest percentage in the Flight A/Flight X game will have their game counted against Flight A percentages achieved in the stratified A/B/C game for the purpose of this contest only.
3. Percentages won in B/C stratiflighted events are restricted in that they can only apply to the B/C awards.
4. A player must play in at least three games at a given

stratum to be eligible for an award for that stratum. To become eligible a player may have to play in more than three unit games if one or more of his/her games were played in a stratiflighted event or with different "Level" players.

5. In the case of ties for a particular award, the award will be split between/among the tying players. If a player wins more than one award he/she will receive \$50 plus a \$10 bonus for each additional award won and \$40 will be awarded to the second place finishers in Flight B and/or Flight C as appropriate

For those of you who haven't played in a while, come on out and join in the competition. For those of you who are Unit Game "regulars," see if you can earn cash rewards for your continued loyalty. See you there.



NVBA on the Internet: <http://www.nvba.org>

## Climbing the Ladder

### New Junior Masters

James Beans  
Sandra Christensen  
Mary C Edge  
Peggy B Errington  
Raymond E Griffin  
William D Murphy  
Elizabeth Nolte  
Jerry Nolte  
Elizabeth A Parker  
Marguerite A Salah  
Edward L Teger

### New Club Masters

Joseph G Bekhor  
Ms Insoon Johnson  
Lucy M Scheer  
Marcella D Schelhammer  
Mary Jo Swain  
David B Weaver  
Nancy Young

### New Sectional Masters

Elias Arbel  
Edwin L Brawn  
James S Edmonds  
Halina Kulczycki  
Paul Stygar  
Ron Terry  
Joyce Weir

### New Regional Masters

Francine M Donahue  
Armand L Klein  
Samuel W Link  
Martha S Mangano  
Nancy B O'Malley  
Roger A Pauley  
Mrs M E Schuler  
Youssof Seraj  
Monica M Shumann  
Richard L Slater  
Barbara M Trapp



### New NABC Masters

Herb K Fallin Jr  
Jerry C Krim  
David H Schultz

### New Life Masters

Pat Beebe  
Maurine K Kuiken  
Salam A Saidi

### New Bronze Life Master

Pat Beebe

### New Silver Life Master

Kathryn S. Heiberg

### New Diamond Life Master

Marshall Kuschner

## Win Fame and Fortune

Starting in January 2004, cash prizes will be awarded for top performances during each calendar quarter.

If you have not played in the Unit game in over six months, we want you back. If you come and play, you will receive a coupon good for a free entry to use any time during the following month.





*(Continued from page 4)*

compensation for services performed. The NVBA has more than adequate cash reserves, but I want to develop and maintain an operating position that protects those reserves against inflation and unexpected expenses and/or shortfalls.

The Board membership itself will experience some turnover in the New Year as some long-standing members of the Board take a well-earned break. The NVBA will need a few new Board members to fill those gaps. Please give some thought to serving on the Board for a two-year term. In addition, the NVBA will continue to need non-Board members as volunteers to help run various NVBA-sponsored activities. The recent Holiday party was a good example of how volunteers can make a difference. We greatly appreciate Stella Perry, Eva Schaffer, Julia Brown, Norma Pierzchala, and others who pitched in to make this annual event a great success.

Close cooperation with the WBL is essential to the success of both Units. The WBL and the NVBA both face the same challenges of decreasing participa-

tion, increasing expenses and slowly shrinking memberships overall. Dick Wegman, the WBL President, and I maintain an informal dialogue to discuss our mutual concerns and initiatives. Margot Hennings and Kathryn Kiley participated in a recent joint WBL/NVBA marketing meeting and as a consequence, the WBL and NVBA will publish and distribute a joint marketing flyer that will be widely distributed in the greater Washington/Northern Virginia area. Other opportunities to meet our joint objectives and share/reduce our joint costs exist and will be aggressively pursued.

Support to the District, MABC and ACBL tends to be event-specific, but the NVBA has active and on-going involvement with all three organizations and their respective programs.

As the New Year approaches, there is much work to be done, but there are many members and potential volunteers to help! And at the end of the day, there are hands to be played and the certain knowledge that we are all playing one of the finest games every invented. It doesn't get any better than that!

## System Building

by Jeff Roman

### *When We Open 1NT—An Advanced Structure*

Last time, we got through the Stayman and transfer auctions over 1NT opening bids. Now, we'll examine the higher level bids and handling interference.

1NT-?

3♣ Weak with both minors (opener passes or corrects to 3♦)

3♦ 1-3-(5-4), game forcing

3♥ 3-1-(5-4), game forcing

3♠ Both majors (5-5), slam try

3NT To Play

4♣ Gerber

4♦ Texas transfer to ♥ (6+ heart suit, either no slam interest or I'm about to bid Roman Key Card (RKC))

4♥ (forced)

4♠, RKC with a void in the

5♣, suit bid...please respond

5♦ to RKC, but, ignore the Ace of the suit bid

4NT RKC

4♥ Texas transfer to ♠ (6+ spade suit, either no slam interest or I'm about to bid RKC)

4♠ (forced)

4NT RKC

5♣, RKC with a void in the

5♦, suit bid...please respond

5♥ to RKC, but ignore the

Ace of the suit bid

4♠ Quantitative raise to 4NT with 4-4 or 2-2-(5-4) in the minors

4NT Quantitative raise to 4NT, 3-3-(4-3)

Minor suit bids at the 5,6 or 7 level are to play.

5NT Forcing to 6NT, invitational to 7NT

• • • • •

### Handling Interference

Since it is relatively rare that the opponents make a penalty double of 1NT (first, they have to be *playing* penalty doubles, and then they have to *have* the cards to make a penalty double), we play a very simple structure over penalty doubles: suits at the 2-level by responder are natural and to play, redouble (xx) is penalty, pass is nothing to say. If responder passes, a suit by opener is natural and to play, xx by

*(Continued on page 11)*

(Continued from page 10)

opener says let's try to find a suit to play in, please bid your cheapest 4-card suit...then we bid up the line until we find the suit we're going to make our stand in.

Over conventional doubles and 2♣ bids, we play 'system on.' In other words, we ignore the opponents completely and bid as if they hadn't interfered (with double of a systemic 2♣ being Stayman).

If the interference is 2♦ or higher: bids at the 2-level are natural and non-forcing, bids at the 3-level are natural and forcing, doubles are take-out (negative) and 2NT is Lebensohl.

### Lebensohl

When the opponents overcall our 1NT opening bid with 2♦, 2♥ or 2♠, we use 2NT as a "puppet" (no choices, partner—you must bid 3♣), so that we have an extra way to bid a suit at the 3-level. We can either bid the suit directly at the 3-level, or bid 2NT and then bid the suit over opener's forced 3♣ bid. Let's look at an example:

1NT-2♥-?

- 2♠ Natural, non-forcing
- 3♠ Natural, game-forcing
- 2NT Bid 3♣, partner
- 3♣ Natural, invitational
- 3♠ Natural, invitational

In that example, our spade suit outranks the opponents' hearts, so we now have three ways to bid spades. In an example where their suit outranks ours, we would have two ways to bid our suit instead of one.

1NT-2♠-?

- 3♥ Natural, game-forcing
- 2NT Bid 3♣, partner
- 3♣ Natural, non-forcing
- 3♥ Natural, non-forcing

After opener's forced 3♣ bid, if we bid a suit which we *could've* bid at the 2-level, it is natural and invitational, if we bid a suit *we could not* bid at the 2-level, it is merely competitive.

The 2NT *puppet* is also used to show whether or not we have a stopper in the overcalled suit:

1NT-2♥-?

- 3♥ Stayman, I *do not* have a heart stopper
- 3NT The values to force to game, fewer than 4 spades, *no* heart stopper

(Continued on page 12)

## Bridge & Bowling - Special GNT Qualifier

Now is your opportunity to participate in one of the most popular events on the bridge calendar, the annual Bridge and Bowling Olympics. Even if you don't like to bowl, or just want to come play in a GNT qualifier with a team of your choice, you are welcome to attend the evening session at KOCH.

If you want to bowl and/or to have us arrange a team for you, contact Monique Smith (703) 585-2359 or e-mail her @ Monique10@myrealbox.com. Deadline for registration to be assigned to a team for bowling and/or bridge is Thursday night, January 22, 2004 at midnight.

**Info required:** Name of person(s) registering, whether you are bowling, bridging or both, and your bowling average (if you know it).

### BOWLING

DATE January 24, 2004  
 TIME Starts at 2:00 PM -- Be there at 1:30 to get shoes/practice  
 PLACE AMF Annandale Lanes  
 4245 Markham St.  
 Annandale, VA  
 PHONE 703-256-2211

### DINNER

PLACE Meet @ Fuddruckers  
 after bowling

### BRIDGE GNT qualifier

TIME 7:00 PM  
 PLACE KOCH Little Falls Rd,  
 Arlington, VA



*(System Building Continued from page 11)*

- 2NT Bid 3♣, partner
- 3♣ Natural, invitational
- 3♥ Stayman, I *have* a heart stopper and 4 spades
- 3NT The values to force to game, fewer than 4 spades, I *have* a heart stopper

In this way, if responder denies a stopper in the opponent's suit (*and opener also doesn't have one*), we avoid 3NT (opener bids his cheapest 4+ card minor telling responder we are looking for our best fit in which to play this hand).

## 2003-2004 District GNT Finals

The District finals get underway for Flights B and C in February, the Open Flight in March, and the A Flight in May. All interested participants must qualify at the club stage.

All teams must pre-register by the date shown below for their flight. Pre-register your team by the due date shown below by sending Rae Dethlefsen (11232 Chestnut Grove Sq #335; Reston, VA 20190) a list of your team members (player numbers helpful), designation of the Flight you are competing in, and a check for \$88.00 (made out to District 6).

The Open and Flight A are only being held in the northern part of the District. The first weekend of Flights B and C are being held at separate northern

and southern sites. This year, Flights B and C are being held on the same weekend at both sites.

The first Saturday of the Open, Flight A and the northern site of Flights B and C will be held at Christ the King Church in Silver Spring, MD. We will be playing at a nearby site on Sunday, either the Laurel Bridge Club or the Washington Bridge Center. Both days of Flights B and C at the southern site will be at the Peninsula DBC in Newport News.

If you have any questions, feel free to contact Rae Dethlefsen, District 6 GNT Coordinator, at 703-709-5205 or by email at raed@erols.com.

*(Continued on page 14)*

GNT SCHEDULE				
	Open Championship	Flight A 0-5000 MPs	Flight B 0-2000 MPs	Flight C NLM/0-500 MPs
Pre-Registration	March 11	April 29	February 26	February 26
1 <sup>st</sup> Weekend	March 13-14	May 1-2	February 28-29	February 28-29
2 <sup>nd</sup> Weekend	April 24-25	May 15-16	March 13-14	March 13-14

*(Continued from page 13)*

### Directions to GNT Venues

**Christ the King Church:** 2301 Colston Dr., Silver Spring, MD. From the I-495, go south on Connecticut Ave. Turn left onto East/West Highway, turn right onto Grubb Road and then 1<sup>st</sup> left onto Colston Dr. Christ the King Church is one block on the left.

**Peninsula DBC:** 640-A 79<sup>th</sup> St., Newport News, VA (757-380-6032). From the west: take I-64 E to US-17S (Exit 258A – J Clyde Morris Blvd); after about 5.5 miles US-17 becomes Jefferson. Go about .2 miles on Jefferson and turn left on 79<sup>th</sup> St. From the east: take I-64W to US-258S (Exit 263A – Mercury Blvd toward James River Br.) for about 3+ miles. Turn left on Jefferson Ave. for .2 miles. Then turn left on 79<sup>th</sup> St; The bridge club is located in the shopping center.

### **Washington Bridge Center:**

1620 Elton Rd. Silver Spring, MD (301-445-0276). From the I-95/495 Beltway, take exit 28A towards White Oak (MD-650 N/ New Hampshire Ave). Turn right on Elton Rd. Turn left into parking lot. Washington Bridge Center is on the second floor.

### **Laurel Bridge Club:**

8654-A Laureldale Dr., Laurel, MD (301-490-1383). From MD-295 (BW Parkway): Exit at MD-198 (Ft. Meade Rd) toward Laurel Laureldale Dr. is the 5<sup>th</sup> traffic light. Turn right on Laureldale Dr. From I-95: Exit at MD-198 (Exit 33A) toward Laurel. Stay on 198 about 5 miles (crossing US-1 and MD-197). Laureldale Dr. is 3<sup>rd</sup> traffic light past MD-197. Turn left on Laureldale Dr. Follow the road back until it opens into the parking lot of a professional plaza. The Laurel Bridge Club is in the middle of the plaza on the left with the name on the marquee.



Many of the bridge clubs in Northern Virginia post their results on the internet. For the current listing of games, see page 24.

Carole Grob

[www.mybridgeclub.com/virginia](http://www.mybridgeclub.com/virginia)

Candy & Marshall  
Kuschner

[www.bridge-results.com/results/5016/cal.html](http://www.bridge-results.com/results/5016/cal.html)

Bernie Oetjen

[www.bridge-results.com/results/5011/cal.html](http://www.bridge-results.com/results/5011/cal.html)

Norma Pierzchala

[www.bridge-results.com/5021/cal.html](http://www.bridge-results.com/5021/cal.html)

## Player of the Year Standings

Players must attend at least three WBL and three NVBA sectionals during the contest period (September, 2003, through April, 2004). Points won on Tournament Thursday evenings are included in the totals, but do not count towards eligibility.

### Remaining Sectionals in the Contest Year

WBL January 8-11, 2004

NVBA February 19-22, 2004

WBL March 4-7, 2004

NVBA April 22-25, 2004

Top 20 Open Leaders		Top 20 NonLM Leaders	
Player	Points	Player	Points
Leo LaSota	72.10	Paul Krueger	14.05
Mark Shaw	59.14	Wanda Avila	13.99
Yi Zhong	57.91	Christon Johnson	11.70
Steve Robinson	54.34	Robert Boorman	11.70
Kenneth Davis	49.49	Stephen Mac Arthur	10.29
Mita Banerjee	46.42	Danut Gliga	10.16
Alfred Steinberg	41.90	Marshall Kramer	9.86
Hailong Ao	40.83	Gloria Halstead	9.05
William Cole	39.31	Anne Derbes	8.95
Fred King	37.24	Robert Schwab	8.95
Barbara Shaw	36.70	Ali Al-Aref	8.03
Richard Ferrin	33.01	Namik Haveric	7.70
John Lawrence	31.47	Mirsad Mujezinovic	7.70
Weizhong Bao	31.37	Susan Strauss	7.27
Eugene Kales	30.92	Neal McKinney	7.12
Frank King Jr	30.31	Samuel Bowlin	7.05
John Ashe	29.66	Madeline Delahan	7.00
Lloyd Rawley	29.47	Franz Delahan	7.00
Robert Gookin	29.44	Thomas Gallagher	6.59
Ed Lewis	28.38	Rex Settle	6.47

## Hail and Farewell

We would like to welcome the following new members into our Unit:

Ellie Clark  
Gordon Clark  
Mrs Jaishree Gupta  
Gail S Hennessa  
Grant W Hennessa  
Ann K Hunter  
Eric A Kugler  
Tracy A Kugler  
Tom Laverty  
Dr Linda N Lion  
Megan Lutz  
Barbara A Major  
Roscille W Nelson  
Ronald M Ozarka

We would like to welcome the following transfers into our Unit:

Peter W. Bambrick  
Barbara L. Boller  
Andrew Brecher  
Prem K Gupta  
Jan Harrington  
Michael A Klein  
Mrs Royce D Meier  
Vincent N Rice  
Katherine Schultz  
Mr Robert A Wherry Jr

We are sorry to note the passing of one of our members:

Jeanne Goldfarb

We give our regards to the following people who have transferred out of our Unit:

Carol W Andreotta  
Dr Arvin S Bhandari  
Joe G Claveau  
Lucille (Luki) J Davis  
Barry N Fogel  
Christian Henrichson  
Clara N Hong  
Edward K Hong  
Margaret T Jordan  
Anil Kankaria  
Joseph Langbart  
Herman Louie  
Ellen Martel  
Leon A Martel  
Susan L Martin  
Vikki M Taylor  
McGuire  
Ben Shapo  
Thomas F Turner

### EasyBridge! and Novice Players!

Come out and join your fellow EasyBridge! and other novice players for a fun-filled, relaxing game of bridge on Saturday afternoon of the upcoming NVBA Sectional Tournament!

**When:** Saturday, February 21, 2004 2:00 p.m.

In the April Sectional, you will have two opportunities to play:

**When:** Thursday, April 22, 2004 7:00 p.m.

Saturday, April 24, 2004 2:00 p.m.

**Where:** All at Knights of Columbus Hall, Arlington.

See ads on pages 25 & 27 of this publication for complete information about the sectionals. If you have any questions, please call John Mason at 703-768-4214.



## Parade of Winners

### NVBA November Sectional

#### THURSDAY FLIGHT A/X PAIRS

(70 Pairs)

- 1 1 Louis Stuckey - Mark Laken
- 2 2 Mita Banerjee - John Lawrence

#### THURSDAY FLIGHT B/C PAIRS

(44 Pairs)

- 1 1 Namik Haveric-Mirsad Mujezinovic
- 2 2 Herbert Behre III - John Lowe III

#### THURSDAY 299ER PAIRS (NVBA)

(12 Pairs)

- 1 Herbert Fallin Jr - Jerry Krim
- 2 Neal McKinney - Bob Armstrong
- 1 1 Josh Remington - Andrew Thomas
- 2 Rolf Valtin - Robert Gemmill
- 2 Rich Hottell - Gary Hinson

#### THURSDAY 199ER PAIRS (WBL)

(12 Pairs)

- 1 1 1 Roma Chandra - Yasmina Patel
- 2/3 Helene Ramo - Barry Smith
- 2/3 Albert Leon - Millie Reizenstein
- 2 Eric Nash - Wilma Middleton
- 2 Joav Steinbach - Shlomit Rind

#### FRIDAY AFTERNOON OPEN A/B/C PAIRS

(50 Pairs)

- 1 William Cole - Mark Shaw
- 2 Dalia Kende - Antionette Logwood
- 1 Fred Hahn Jr - Edward Heberg
- 2 Salim Saidi - Kamil Tabbara
- 1 Edward Rodrigues - Julia Brown
- 2 Robert & Frances Lawrence

#### FRIDAY AFTERNOON 299ER PAIRS

(12 Pairs)

- 1 Donor Lion - Wanda Avila
- 2 Charles Allport - Sandra Allport

#### FRIDAY AFTERNOON 99ER PAIRS

(14 Pairs)

- 1 A. Edwin & M. Josette Johnson
- 2 1 1 Peggy Errington - Mary Edge
- 2 2 Linda Szyszka - Toni Vasquez

#### FRIDAY EVENING OPEN PAIRS

(40 Pairs)

- 1 Richard Ferrin - Eugene Kales
- 2 Ed Lewis - Frank King Jr
- 1 Weizhong Bao - Yi Zhong
- 2 John Korfonta - Sam Westgate
- 1 Jon Farber - Steven Fox
- 2 Patricia Huck - Douglas Allan

#### FRIDAY EVENING 299ER PAIRS

(12 Pairs)

- 1 1 1 Ellie Clark - Elizabeth Parker
- 2 2 2 Mary O'Shea - Jeff Youngen

#### SATURDAY MORNING OPEN PAIRS

(30 Pairs)

- 1 1 Paul Krueger - James Stormes
- 2 2 1 Barry Anderson - Judy Braddy
- 2 Rex Settle - Gail Zamboni

#### SATURDAY MORNING SENIOR PAIRS

(22 Pairs)

- 1 1 1 Rolf Valtin - Robert Gemmill
- 2 Samuel Mills Jr - John Ashe
- 2 Madan Nanda - Bernard Oetjen
- 2 Susan Strauss - Richard Slater

#### SATURDAY MORNING 99ER PAIRS

(10 Pairs)

- 1 Cathy Stryker - Nancy Loomis
- 2/3 1 Janice Smith - Ethel Hoffman
- 2/3 Mary O'Shea - Jeff Youngen
- 2 Edwin Brawn - Susan Brawn

#### SATURDAY AFTERNOON A/X PAIRS

(36 Pairs)

- 1 Sarah Cressey - Frank King Jr
- 2 Helene Bauman-Jim Wakefield
- 1 Betty Bursey - Cassandra Smith
- 2 David Fleischer - Lucy McCoy

#### SATURDAY AFTERNOON B/C/D PAIRS

(28 Pairs)

- 1 Zehava Tadjer - Samuel Mills Jr

*(Continued on page 18)*

- 2 1 Hannah Moore - Mildred Hartshorn
- 2 Michael Lawrence - Craig Olson
- 1 Robert Schwab - Anne Derbes
- 2 John Hornbeck - Peter Mirsky

**SATURDAY AFTERNOON 99er PAIRS  
(16 Pairs)**

- 1 1 Edwin Maixner - Paul Stygar
- 2 2 Dick Verdow - Jean Verdow
- 1 Janice Smith - Ethel Hoffman
- 2 Peggy Errington - Mary Edge

**SATURDAY AFT. EASYBRIDGE PAIRS  
(6 Pairs)**

- 1/2 Nancy Ward - Anita Lancaster
- 1/2 Eric Beard - Dale Hunt

**SATURDAY EVE. OPEN A/B/C PAIRS  
(48 Pairs)**

- 1 Diane Walker- Rae Dethlefsen
- 2 Helene Bauman - Kenton Schoen
- 1 Robert Gunnell Jr -Leslie Powell
- 2 1 Steven & Sandra Forsythe
- 2 Elliot Grant-James Davenport Jr

**SUNDAY FLIGHT A/X SWISS  
(17 Teams)**

- 1 Benjamin Brill - Russell Divens -  
Don Probst - Arnie Frankel
- 2 Margot Hennings - Prahalad  
Rajkumar - Helene Bauman -  
Vincent Wilmot Jr
- 1 Jason Meyer - Lloyd Rawley -  
Clyde Kruskal - Michael Richey

**SUNDAY FLIGHT B/C SWISS  
(15 Teams)**

- 1 1 Ralph Bayer - Richard Thomas -  
Edward Duffy - Robert York
- 2/3 Nadyne Cheary -Wesley Jones Jr  
Sam McMillan Jr - Norma  
Pierzchala
- 2/3 Bill Gainer - Robert Stearns -  
Charles Young Jr - Lynn  
Boardman

- 2 Rich Hottell - John Lowe III -  
Juanita Fernandez -  
Suzanne Abrams

**SUNDAY MORNING 299ER SWISS  
(10 Teams)**

- 1/2 1 David Raley - Ali Al-Aref -  
William Colket - Doreen Colket
- 1/2 Susan Strauss - Richard Slater -  
Robert Kubal - George Selzer

**SUNDAY MORNING 99ER SWISS  
(3 Teams)**

- 1 Stella Perry - Jeanne Muller -  
Lucy Scheer - Patricia Needham

**SUNDAY AFTERNOON 299ER SWISS  
(7 Teams)**

- 1 Margaret Storey - Holly Wills -  
Dorothy Bechtle - Jean Shoepe
- 2/3 Silvia Keenan - Donor Lion -  
Cathy Gallucio - Wanda Avila
- 2/3 Margaret Brown - Neal McKinney  
Kim Ashenden - Bonnie Polk

**Top 10 MP Winners (All Players)**

- 1 22.19 Helene Bauman
- 2 17.13 Don Probst
- 3 15.66 Frank King Jr
- 4 14.78 Arnie Frankel
- 5 14.59 Ed Lewis
- 6 14.57 Eugene Kales
- 7 14.33 Margot Hennings
- 8 14.15 Richard Ferrin
- 9 13.75 Russell Divvens
- 13.75 Benjamin Brill

**Top 10 MP Winners (<2000 MPs)**

- 1 14.15 Richard Ferrin
- 2 13.75 Russell Divvens
- 3 12.42 Prahalad Rajkumar
- 4 10.31 Vincent Wilmot Jr
- 5 9.50 Mita Banerjee
- 9.50 John Lawrence
- 7 8.85 James Stormes

- 8 8.01 Yi Zhong
- 9 7.73 Ronald Zucker
- 10 7.63 Jim Wakefield

**Top 10 MP Winners (<750 MPs)**

- 1 14.15 Richard Ferrin
- 2 7.73 Ronald Zucker
- 3 6.60 Samuel Mills Jr
- 4 6.53 Paul Krueger
- 5 6.39 Debnarayan Dhar
- 6 6.36 John Lowe III
- 7 5.94 Judy Braddy
- 8 5.27 Edward Duffy
- 5.27 Richard Thomas
- 5.27 Ralph Bayrer
- 5.27 Robert York



### Ocean City Regional 20-26 October 2003

#### MONDAY KICKOFF OPEN KO 1 PUMPKIN (11 Teams)

- 2 Joan Shields - Marie Creisher
- Mita Banerjee - Hanna Schepps

#### MONDAY KICKOFF OPEN KO 5 PLUM (13 Teams)

- 1 Jerry Krim - Herbert Fallin Jr -  
Thomas Din - Jane Frost

#### TUESDAY SENIOR SWISS (36 Teams)

- 2/3 Mark Tonnesen - Shirley Kollas -  
La Quitta Talbot - Carole Grob
- 2 Patricia Huck - Dilip Udeshi -  
George North - Barbara Friedman

#### TUESDAY AM SIDE SERIES (18 Pairs)

- 1 Ken Davis - John Ashe

#### WEDNESDAY AFT SHOREBIRDS SIDE (20 Pairs)

- 2 Alex Perez - Aida Perez

#### WEDNESDAY EVE BAM TEAMS (14 Teams)

- 1 1 1 Patricia Kanz - Annette Berry  
Maureen & Mark Durocher

#### WEDNESDAY EVE SIDE GAME (27 Pairs)

- 1 Robert Padgett - Linda Padgett

#### WEDNESDAY OPEN PAIRS (56 Pairs)

- 1 Richard Mucci - Zeke Letellier
- 2 Hope Watts - Jane Sturgis

#### WED-THU AM COMPACT CONS 1 (5 Teams)

- 2 Mark Tonnesen - Shirley Kollas  
La Quitta Talbot - Carole Grob

#### MARLINS KO 4: SCALLOP (16 Teams)

- 1 A William Schmidt - Aquil  
Ahmed - A Patel - Eva Shaffer

#### MARLINS KO 5: CLAM (14 Teams)

- 2 Nancy Arnold - Maurine Kuiken  
Cynthia Helms - David Schultz

#### MARLINS KO 6: OYSTER (13 Teams)

- 1 Jerry Krim - Herbert Fallin Jr -  
Lawrence Cowan - Michael  
Kelley

#### THURSDAY EVE B-A-M TEAMS (12 Teams)

- 1 Jackie Thompson - Marlys  
Moholt - John Lowe III -  
Livingston Johnson

#### THURSDAY STRAT SWISS (50 Teams)

- 1 Richard Mucci - Frances Mucci -  
Zeke Letellier-Jennifer Koonce
- 2 Robert Padgett - Linda Padgett  
Bea Suskin - Phyllis Talley
- 1 Patricia Kanz - Annette Berry -  
Mark & Maureen Durocher

#### THURSDAY AFT 0-300 PAIRS (26 Pairs)

- 1 Nasser Makhzani - Farideh  
Makhzani

*(Continued from page 19)*

**FRIDAY EVE BAM TEAMS  
(18 Teams)**

- 2 Livingston Johnson-Robert Jenkins  
Rose Berman - Melody Jenkins
- 1 Richard Conley - Elizabeth Mallon  
John Christensen -Robert Wissman

**FRIDAY EVE 0-300 PAIRS  
(24 Pairs)**

- 1 Herman Tarnow - Diana Stein
- 211 Marguerite Salah - Ana Jubiz

**FRIDAY STRAT SENIOR PAIRS  
(28 Pairs)**

- 1 Jennifer Koonce - Zeke Letellier

**FRI-SAT COMPACT KO BKT 2  
(16 Teams)**

- 1 James Andre - Lily Andre - John  
Lowe III - Livingston Johnson

**DUNES KO 1 SAND CRABS  
(13 Teams)**

- 2 Robert Hopkins Jr - Joan Lewis  
Margot & Donald Hennings

**DUNES KO 3 SAND CASTLES  
(16 Teams)**

- 1 Lynn Rattinger - Richard Willis  
Fred Hahn Jr - James Bartow

**DUNES KO 5 SAND BAR  
(16 Teams)**

- 1 Jerry Krim - Herbert Fallin Jr -  
Lawrence Cowan - Michael Kelley

**SATURDAY AM SIDE GAME  
(22 Pairs)**

- 2 Sam Westgate - Jean Mayo
- 1 Leonid Fastovsky-Sam Coleman
- 21 Jane Chufar - Eric Chufar

**SATURDAY EVE BAM TEAMS  
(13 Teams)**

- 1 Sam Coleman - Edmond Craig -  
Joan Beal - Paul Johnson III
- 2/3 Mark Tonnesen - Shirley Kollas  
La Quitta Talbot - Carole Grob

**SATURDAY EVE 0-300 Pairs  
(24 Pairs)**

- 1 Lee Faber - Phyllis Kurlle
- 2 Marguerite Salah - Ana Jubiz

**BLUE CRAB KO-DEVILED -1  
(13 Teams)**

- 1 Ed Lewis - James Murphy -  
Jack Diskin - Maria Mitchum -  
Judith Bloomer- George Bloomer Jr

**BLUE CRAB KO-CRAB CAKE-2  
(13 Teams)**

- 2 Richard Conley - Elizabeth Mallon  
Robert Wissman-John Christenson

**BLUE CRAB KO-IMPERIAL-3  
(10 Teams)**

- 1 Lily Andre - Thomas Gallagher  
James Andre -John Lowe III

**SUNDAY SENIOR SWISS  
(14 Teams)**

- 1 Melvin Lubart - Jim McKeown -  
Lorraine Yarmowich - Robert Walsh

**SUNDAY MORN 299er SWISS  
(7 Teams)**

- 2 Gene Chufar - Wilma Laderer -  
Jane Chufar - Eric Chufar

**SUNDAY SIDE GAME  
(12 Pairs)**

- 2 Paul Krueger - Barbara Summers

**Chesapeake Fall Sectional  
Baltimore November 14-16**

**SATURDAY AFT A/X PAIRS  
(16 Pairs)**

- 1 Ken Davis - Dan Kasture

**SATURDAY EVE OPEN PAIRS  
(28 Pairs)**

- 2/3 Ken Davis - Dan Kasture

**SUNDAY SWISS  
(24 Teams)**

- 2 Jennifer Koonce - Zeke Letellier -  
Diane Lazarus - Ed Lazarus
- 2 Randall Roberts - Dennis Wick -  
Robert Back - Gloria Halstead

**NABC New Orleans -  
20-30 November 2003**

**FRENCH QUARTER KO BKT 9  
(16 Teams)**

- 2 Herbert Fallin Jr - Jenny Rose -  
Jerry Krim - Jean Valentine

**MONDAY A/X PAIRS  
(140 Pairs)**

- 1 Marshall Kuschner - Don Geerhart

**DEAD TURKEY WALKING KO 3  
(16 Teams)**

- 1 Rusty Krauss - Barry Falgout -  
Alice Wegman - Richard Wegman

**TUESDAY EVE 299er PAIRS  
(20 Pairs)**

- 1 Jerry Krim - Herbert Fallin Jr

**WEDNESDAY EVE IMP PAIRS  
(72 Pairs)**

- 2 Cecily Kohler - Ellen Melson

**2ND FRIDAY STRAT OPEN PAIRS  
(114 Pairs)**

- 1 Tom Cogan - Paul Benedict

**THU-FRI A&E SIDE GAME  
(384 Players)**

- 1/2 Marshall Kuschner
- 1/2 Candace Kuschner

*(Continued on page 22)*



**RealtyToWeb.com**

2557 John Milton Dr  
Oak Hill, VA 20171

703-391-7450 (PHONE)  
703-391-7455 (FAX)  
Cell 703-201-5132

Email: Broker@RealtyToWeb.com



Eva Klivington,  
Principal Broker  
VA, MD & DC

**FOR  
CUSTOMERS**



**SERVING  
VA, MD & DC**

Trying to **Sell** your home? Want to **Buy** your  
dream home? Trying to **Find** the right real estate  
investment? **Foreclosures Bank Owned & HUD?**

If you list your property with a Bridge  
Player you will get up to **\$4,000**  
credited to you at settlement.

If you purchase a home through a  
Bridge Player, you will get up to  
**\$1,000** credited to you at settlement.

We have successfully SERVICED MANY OF YOUR FELLOW BRIDGE  
PLAYERS. We will sell your home fast with our professional full service and  
offer you a great commission deal. View our web site 800,000+ MLS properties



Curious to know how much your  
house is worth? Visit our website  
**RealtyToWeb.com**

*(Continued from page 21)*

**WM KEOHANE N.A. SWISS TEAMS**

- 11 Richard Ferrin - Eugene Kales -  
Alan Schwartz - Ai-Tai Lo

**SATURDAY EVE 299er SWISS  
(8 Teams)**

- 1 Morgan Krim - Jerry Krim -  
Christine Malfarlane - Lynn Mix

**2ND SUNDAY SIDE SERIES 3 of 4  
(20 Pairs)**

- 2 Paul Benedict - Tom Cogan



**WBL National Capitol  
Tournament 16-19 Oct**

**THURSDAY EVE FLIGHT B/C PAIRS  
(50 Pairs)**

- 2 1 Youssef Seraj - Abdul Etemadi

**THURSDAY EVE FLIGHT A/X PAIRS  
(63 Pairs)**

- 2 Joan Shields - Mita Banerjee

**FRIDAY AM Flight A/X  
(20 Pairs)**

- 1 Ken Davis - John Ashe

**FRIDAY AM Flight B/C  
(20 Pairs)**

- 1 Cecilia Valdivieso - Dayle Masumura

**FRIDAY AFT A/X PAIRS  
(24 Pairs)**

- 1 John Klayman - Robert Hopkins Jr  
2 Robert Gookin - Donna Rogall

**FRIDAY AFT B/C/D PAIRS  
(21 Pairs)**

- 2 2Aquil Ahmed - Thavendran  
Arulnandhy

**FRIDAY AFT 299er PAIRS  
(12 Pairs)**

- 2 Gloria Halstead - Wanda Avila

**FRIDAY EVE STRAT PAIRS  
(42 Pairs)**

- 1 1 Elizabeth Nolte - Jerry Nolte

**SATURDAY AM PAIRS  
(26 Pairs)**

- 2 G S Jade Barrett - M Schuler

**SATURDAY AM 299er PAIRS  
(12 Pairs)**

- 1 Kathrine Loh - Edward Molnar

**SATURDAY AFT B/C/D PAIRS (31  
Pairs)**

- 1 M Cassandra Smith - Betty Bursey  
2 Thomas Gallagher - John Lowe III

**SATURDAY AFT SENIOR PAIRS  
(14 Pairs)**

- 1 Jean Levin - Carolyn Gibson  
2 John Mason Jr - Michael Polunin

**SATURDAY A/X PAIRS  
(28 Pairs)**

- 2 1 Hailong Ao - Yi Zhong

**SATURDAY Eve B/C/D PAIRS  
(24 Pairs)**

- 1 1 Ed Rodrigues - Glenn Young

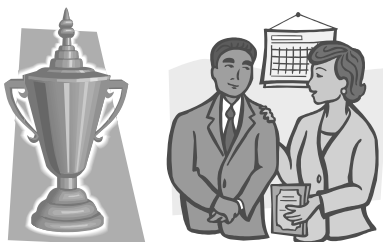
**SUNDAY FLT B/C/D SWISS  
(16 Teams)**

- 2/3 Sam Westgate - M Cassandra Smith -  
Betty Bursey - Carole Banks

**SUNDAY PM 0-300 SWISS  
(4 Teams)**

- 1 David Raley - Al-Aref -  
Jane Frost - Thomas Din





(Continued from page 22)

**Washington Bridge League  
70th Annual D.C. Championships  
December 4-7, 2003**

**THURSDAY B/C PAIRS**

(45 Pairs)

- 1 Walter Smith Jr - Evan Allen
- 2 Samuel Bowlin - John Mason Jr

**FRIDAY AM A/X PAIRS**

(10 Pairs)

- 1 1 Paul Krueger - James Stormes

**FRIDAY AFT B/C PAIRS**

(12 Pairs)

- 1 1 Christon Johnson - Robert Boorman

**SATURDAY AFT 0-300 PAIRS**

(11 Pairs)

- 1 1 Katherine Loh - Edward Molnar

**SUNDAY A/X SWISS**

(16 Teams)

- 2 Steve Robinson - Jeff Roman -  
William Cole - Mark Shaw
- 2 Hailong Ao - Harry Zhou -  
Kefu Xu - Weizhong Bao

**SUNDAY B/C SWISS**

(17 Teams)

- 1 1 Christon Johnson - Robert Boorman -  
Michael Goldman - William Mendez Jr

**SUNDAY AM 0-300 SWISS**

(5 Teams)

- 1 Donor Lion - Wanda Avila -  
Neal McKinney - Kim Ashenden
- 2 Marie Siefring - Gloria Halstead -  
Margaret Buda - Robert Von Moss

**NVBA Annual MP Races**

(All races as of November 2, 2003)

**Man of the Year**

- |    |        |                   |
|----|--------|-------------------|
| 1  | 100.51 | Robert Gookin     |
| 2  | 93.12  | Kenneth Davis     |
| 3  | 76.98  | Charles Yaple     |
| 4  | 64.40  | Donald Geerhart   |
| 5  | 62.46  | Ed Lewis          |
| 6  | 53.51  | Stan Schenker     |
| 7  | 47.60  | David Milton      |
| 8  | 45.67  | Sumner Steinfeldt |
| 9  | 41.32  | James Gumbert     |
| 10 | 39.99  | Ronald Spieker    |

**Woman of the Year**

- |    |        |                  |
|----|--------|------------------|
| 1  | 104.17 | Janet Gookin     |
| 2  | 80.43  | Margot Hennings  |
| 3  | 45.02  | Helene Bauman    |
| 4  | 33.95  | Norma Pierzchala |
| 5  | 33.66  | Jean Levin       |
| 6  | 30.92  | Mary Mudd        |
| 7  | 30.63  | Marjorie Gazzola |
| 8  | 26.28  | Vonnie Lavender  |
| 9  | 23.78  | Julia Brown      |
| 10 | 22.80  | Gabriele Nanda   |

**Intermediate (Rush Buckley Award)**

- |    |       |                   |
|----|-------|-------------------|
| 1  | 43.32 | Prahalad Rajkumar |
| 2  | 28.59 | Mel Yudkin        |
| 3  | 24.93 | Christon Johnson  |
| 4  | 23.83 | Sulaiman Ghaussy  |
| 5  | 23.06 | Leo Cardillo      |
| 6  | 22.33 | Paul Krueger      |
| 7  | 20.67 | Samuel Bowlin     |
| 8  | 15.33 | Abdul Etemadi     |
| 9  | 14.96 | Monica Shumann    |
| 10 | 13.92 | Ali Al-Aref       |

**Rookie of the Year**

- |    |      |                   |
|----|------|-------------------|
| 1  | 8.17 | Richard Hottell   |
| 2  | 5.46 | Joe Lentz         |
| 3  | 4.29 | Michele Liebel    |
| 4  | 4.25 | Robert Brady      |
| 5  | 3.18 | Jenny Shaefer     |
| 6  | 3.10 | Elizabeth Traylor |
| 7  | 3.02 | John Miles        |
| 8  | 2.91 | Susan Brawn       |
| 9  | 2.90 | Edwin Brawn       |
| 10 | 2.74 | David Banh        |

## Club Games in Northern Virginia

(All phone numbers are 703 area code)

### Monday

- 10:00 am Ballston BC - Bill Gress - **Open** - Arlington 243-7714
- 10:00 am Virginia Suburban DBC - Marilyn Golias - **Open** - Annandale 241-7741
- 10:00 am 4-H's DBC - Siegfried Hoermann - **Invitational** - Alexandria 765-3843
- 11:00 am Senior Center Lenore Ward - **Invitational** - Cascades 723-8614
- 7:00 pm Fairfax DBC - Jeffa Dettinger - **Open** - Ft. Belvoir 780-5162
- 7:00 pm Montebello DBC - John Mason - **Invitational** - Alexandria 768-4214
- 7:00 pm Knights of Columbus BC - Bernie Oetjen - **Open** Arlington 790-5170
- 7:30 pm Loudoun County BC - Allan Sitterson - **Open** Leesburg 729-3756

### Tuesday

- 10:00 am Glen Carlyn DBC - Candy Kuschner - **Open & NLM** - Arlington 758-0906
- 6:30 pm Ballston BC - Bill Gress - **Open** - Arlington 243-7714

### Wednesday

- 9:45 am Engineer's Officer's BC - Helen Sigleo - **Open** - Fort Belvoir 360-4051
- 10:00 am Arlington County DBC - Alan Breed - **Open** - Ballston 538-5844
- 11:00 am JCC of No. Va. BC - Louise Sellers - **Open** - Fairfax 281-5576
- 12:30 pm 4-H's DBC - Siegfried Hoermann **Invitational** - Alexandria 765-3843
- 7:30 pm Reston DBC - Candy Kuschner - **Open & 199er** - Reston 758-0906

### Thursday

- 10:00 am Hawthorne DBC - Marilyn Golias - **Open** - Annandale 241-7741
- 10:00 am Thursday Morning BC - N.Pierzchala/C.Grob - **Open & 199er** - Ballston 892-1292/960-2471
- 10:00 am Vienna DBC - Louise Sellers - **Open** - Vienna 281-5576
- 12:30 pm 4-H's DBC - Siegfried Hoermann - **Invitational** - Alexandria 765-3843
- 1:00 pm Senior Center - Lenore Ward - **Invitational** - Cascades 723-8614
- 7:00 pm NVBA Unit Game - Marshall Kuschner **Open & 199er** - Alexandria 758-9153
- 7:30 pm Engineer's Officer's BC - Helen Sigleo - **Open** - Ft. Belvoir 360-4051

### Friday

- 10:00 am Fun Friday Bridge Frolic - S.McMillan/N.Pierzchala - **Open & 199er** - Annandale 920-3535/892-1292
- 10:00 am Friday Cash Bridge - K.Heiberg/A.Gray - **Open** - Arlington (Lyon Park) 892-6721/750-3214
- 1:30 pm Loudoun Bridge Buffs - James Rocks - **Open** - Leesburg 777-5669

### Saturday

- 9:00 am Norma's Game at KOCH - Norma Pierzchala - 0-500 Arlington 892-1292
- 1:00 pm Beltway BC at KOCH - Bernie Oetjen/Norma Pierzchala - **Open** - Arlington 790-5170/892-1292

### Sunday

- 12:30 pm VA Suburban DBC - Marilyn Golias - **Open & 199er** - Annandale 241-7741



## This Page Intentionally Left Non-Blank

In the print edition this page would have contained the advertisement for the NVBA February Sectional

Adequate resolution for the image to make it readable would result in a much larger file to transmit and download. In consideration of those members without broadband access it has been omitted.

Please access the PDF version on the NVBA website for tournament details.

<http://www.nvba.org/documents/0402sect.pdf>

**This Page Intentionally  
Left Non-Blank**

In the print edition this page would have contained the  
advertisement for the WBL March Sectional

Please access the ad on the WBL website for tourna-  
ment details.

## This Page Intentionally Left Non-Blank

In the print edition this page would have contained the advertisement for the NVBA April Sectional

Adequate resolution for the image to make it readable would result in a much larger file to transmit and download. In consideration of those members without broadband access it has been omitted.

Please access the PDF version on the NVBA website for tournament details.

<http://www.nvba.org/documents/0404sect.pdf>

## Northern Virginia Bridge Association

10015 Manor Place , Fairfax, VA 22032

### 2003-2004 Board of Directors

Leo Cardillo—President  
Margot Hennings—Vice President  
Ron Spieker—Treasurer  
Lucy McCoy—Secretary  
Robert Hartmann  
Ed Heberg  
Peter Hughes  
Katherine Kiley  
Ron Kral  
Paul Krueger  
Barry Sparks

Chief Unit Director — Marshall Kuschner

The *NVBA Newsletter* is published four times a year by the Northern Virginia Bridge Association. If you need membership information or have a change of address to report, contact Matt Pierzchala at 703-892-1292; for information/suggestions about newsletter content, contact Lucy McCoy at 703-848-2331. To receive the newsletter electronically, send an e-mail request to [RonKral@aol.com](mailto:RonKral@aol.com).

Pre-Sorted Standard  
U.S. Postage  
PAID  
Dulles, Virginia  
Permit No. 056