

NVBA Newsletter

October - December 2012

Northern Virginia Bridge Association

Holiday Party - December 13, 2012

THE ANNUAL NVBA HOLIDAY PARTY, which includes dinner and a bridge game, will be held on Thursday, December 13, 2012, at the Beth El Congregation, 3830 Seminary Rd. in Alexandria, VA. That week is a Sectional Tournament at Clubs (STaC) week, so the game will be held with STaC strats, and silver masterpoints will be awarded for placing in this game.

As in the past, the holiday party is part "catered" and part "pot luck." Everyone is asked to contribute a food dish....appetizer, salad, casserole or dessert. The NVBA will provide main courses and beverages,

(Continued on page 7)

Inside this issue:

President's Message	2
Calendar of Events	3
Jack of Hearts	4
In Memoriam—Lowell Snyder	6
Milestones	8
Hail and Farewell	9
Parade of Winners	10
Bridge clubs and websites	20
NAP D6 Finals Info	21
Tournament Ads	22

Of Special Interest

- D6 STaC, Oct. 1-7
- D6 NAP Finals, Oct. 13-14
- **NVBA Sectional, Oct. 25-28**
- Augusta, GA REGIONAL, Oct. 29-Nov. 4
- Virginia Beach, VA REGIONAL, Nov. 12-18
- San Francisco, CA Fall NABC, Nov. 22-Dec. 2
- D6 STaC, Dec. 10-16
- **NVBA Holiday Party, Dec. 13**
- Charleston, SC REGIONAL, Dec. 26-Jan. 1
- WBL Sectional, Jan. 3-6, 2013

NEW ACBL CEO VISITS NVBA SECTIONAL

by Mike Cappelletti NVBA President



At our September Sectional, I had the honor of playing bridge with Robert Hartman, the new Chief Executive Officer of the American Contract Bridge League (ACBL) who has been going around the country, meeting many people and acquiring first-hand knowledge of what's happening in the grass roots of the ACBL. Turns out, he is also an excellent bridge player. During his visit here he played in four events with four different partners and had two firsts overall and a second.

Among the many things we chatted about were the future of bridge and increasing the overall bridge population. He is very interested in increasing public awareness of organized bridge, and he will certainly support all our efforts to attract younger players. One of his wins here at our Sectional was the Saturday AM B/C Pairs with David Soukup of Arlington, who recently played on the U.S. Junior Team in China and whose team won the Flight C GNT National Finals in Philadelphia this summer.

"... If each of us took the trouble to introduce one of our friends or relatives to duplicate bridge, we would greatly increase our membership (and obviously enrich their lives)."

During the past year, here in the NVBA, we have doubled the number of schools in our Bridge-in-School programs thanks to volunteers generous with their time working in these schools and with financial assistance from the ACBL. We also have had several tables of these new young student players attending our various tournaments. I understand that the ACBL is also about to fund new advertising efforts and to further promote young player tournaments.

Since we all seem to agree that bridge is really a great game - not only enjoyable but also good for your mind - maybe we should all get on the bandwagon and promote bridge. If each of us took the trouble to introduce one of our friends or relatives to duplicate bridge, we would greatly increase our membership (and obviously enrich their lives).

Mike Cappelletti

Upcoming NVBA Games & Special Events

Oct	4	Beth El	7:00	District 6 STaC Stratified Pairs
Oct	11	Beth El	7:00	Club Appreciation Swiss Teams
Oct	18	Beth El	7:00	Stratiflighted Club Appreciation Pairs
Oct	25	Beth El	7:00	NVBA Sectional - Stratiflighted Pairs
Nov	1	Beth El	7:00	Stratiflighted Unit Championship
Nov	8	Beth El	7:00	Stratified Grand National Teams
Nov	15	Beth El	7:00	Stratiflighted Unit Championship
Nov	22	Closed—Thanksgiving		
Nov	29	Beth El	7:00	Stratiflighted Unit Championship
Dec	6	Beth El	7:00	Stratified Grand National Teams
Dec	13	Beth El	7:00	Holiday Party / Stratified STaC
Dec	20	Beth El	7:00	Stratified Unit Championship
Dec	27	Beth El	7:00	Stratified Unit Championship

Stratification Limits:

All NVBA Unit Games include a separate Stratified 199er game.
 Players with 0-5 MPs play free every Thursday in all scheduled events.
 For the D6 StaC, the stratification is: 0-500/500-1500/1500+

Upcoming Sectionals

N V B A	October 3-6, 2012	W B L	January 3-6, 2013
	February 7-10, 2013		April 4-7, 2013
	May 2-5, 2013		July 17-21, 2013
	October 24- 27, 2013		October 3-6, 2013

For information on Tournaments - Cancellations - Special Events - Club games

NVBA on the Internet: <http://www.nvba.org>

The Jack of Hearts

by Marshall Kushner

Remember the bad old days of the ACBL? About 20 years ago we were an aging population and our membership was shrinking. "Death, as it does to all men," comes to bridge players and there was no influx of new players to offset the attrition. Young people wanted no part of it. Bridge? That was a card game your grandparents played. Besides, it was hard. Much easier to grab the latest video game that could be mastered in three weeks, maybe less. Instant gratification, that's the ticket! Well, things have changed. Maybe it's bridge being taught in the schools, maybe a cosmic cycle unfolding, but youngsters are now coming to the game. With a vengeance. And, I'm happy to report, nowhere is this trend more apparent than in the NVBA. Just four years ago Stephen Drodge won the National 99er Pairs; then he followed it up by winning the National NLM Pairs a year later. Wasn't that nice? High school kid from right here in Northern Virginia! Well, don't look now, but those triumphs are ancient history. Fast forward to 2012, and Stephen ranks as one of the top players in our area, regularly winning open events. Something else happened four years ago. A nine-year-old started showing up at our unit game. Wasn't that cute? He could barely see the dummy. Might have played bridge with a booster seat. Turns out, he started reading the bridge column in the *Washington Post* and decided he could play this game. He was right. He began playing with anyone who would play with him. Didn't do it? Sorry, you missed your chance. Meet David Soukup, now thirteen and seeing the dummy quite well, thank you. David and his team won the Flight C GNT in Philadelphia to become our latest National Champion. A newly minted Life Master, David sometimes chooses to play up in Flight A events, where he holds his own.

The City of Brotherly Love, however, was good to more than just David. Jay Kelkar and Bill Young were 8th in the 0-5000 LM Pairs, while Jay Cherlow was 6th in the 0-1500 LM Pairs. And that was just the first weekend! Things slowed a bit after that but not for long. Catherine and Wayne Bardsley were 5/6 in the National 199er Pairs followed by Linda and Jim Dick finishing 3/4 in the Mini-Spangold. Others garnering national overalls were Jeff Roman (LM Pairs), Barry Spector, Adair Gellman, Vin Bartone, and Gay Nanda (0-5000 LM Pairs), Cecily Kohler (Wernher Open Pairs), Annie and Alan Schwartz along with John Miller and Robbie Hopkins (Mixed BAM), Amanda Carter (Mini-Spangold), Ai-Tai Lo (Fast Pairs), and Stan



*"Maybe it's
bridge
being
taught in
the schools,
maybe a
cosmic
cycle
unfolding,
but
youngsters
are now
coming to
the game.
With a
vengeance.."*

Upcoming NVBA 199er Unit Games

Oct	4	Beth El	7:00	D6 STaC - 199er Pairs
Oct	11	Beth El	7:00	199er Club Appreciation Swiss Teams
Oct	18	Beth El	7:00	199er Club Appreciation Pairs
Oct	25	Beth El	7:00	NVBA Sectional - 199er Pairs
Nov	1	Beth El	7:00	199er Stratiflighted Unit Championship
Nov	8	Beth El	7:00	199er Stratiflighted Unit Championship
Nov	15	Beth El	7:00	199er Stratiflighted Unit Championship
Nov	22	Closed—Thanksgiving		
Nov	29	Beth El	7:00	199er Stratiflighted Unit Championship
Dec	6	Beth El	7:00	199er Stratiflighted Unit Championship
Dec	13	Beth El	7:00	District 6 STac—199er Pairs—Holiday Party
Dec	20	Beth El	7:00	199er Stratiflighted Unit Championship
Dec	27	Beth El	7:00	199er Stratiflighted Unit Championship

Stratification Limits:

All NVBA Unit Games include a Stratified 199er game.
 Players with 0-5 MPs play free every Thursday in all scheduled events.
 For the D6 StaC, the stratification is: 0-500/500-1500/1500+

Upcoming Sectionals

N V B A	October 3-6, 2012	W B L	January 3-6, 2013
	February 7-10, 2013		April 4-7, 2013
	May 2-5, 2013		July 17-21, 2013
	October 24- 27, 2013		October 3-6, 2013

For information on Tournaments - Cancellations - Special Events - Club games

NVBA on the Internet: <http://www.nvba.org>

In Memoriam – Lowell Sawyer

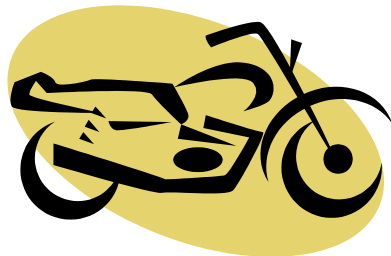
God must have needed a fourth. He took Lowell Sawyer away from his family, friends, and bridge partners on July 27, 2012. Lowell loved to have fun and may have been the biggest character in the NVBA. Whether playing bridge or just living, it seemed he couldn't walk across the street without having an adventure.

Lowell was as kind and giving and generous as a person could be. A Diamond Life Master, he was a mentor to many, not only ordinary players, but some who grew to play at a high level like his daughter Vicky and world-class player Eric Greco. He was patient and had a deep knowledge of the game. His excellence at defense and the play of the hand were legendary. His partners were often surprised with small gifts, not only at Christmas, but just because Lowell was thinking of them.

He did have some ideas about bridge that may have been out of the mainstream. He believed that since no trump contracts had a higher trick score than suits, they should be played as often as possible. One day Lowell held 17 points including AKQJxx in spades. After he opened 1NT, he responded 2♦ to partner's Stayman inquiry, and they landed in 3NT. His left-hand opponent led a spade, and Lowell proceeded to run the suit. With each spade that hit the table, lefty's eyes grew wider. The only tricks Lowell lost were the same two aces he would have lost in a spade contract. Lefty said in a most perplexed voice, "I thought 2♦ denied four spades." Lowell replied, "It did. I didn't have four, I had six."

Lowell had another tenet: Bid whatever you don't have. His opponents were mystified, and he enjoyed seeing his partner squirm trying to figure out the hand. He garnered many tops from psychs, but he had fun whether they led to tops or bottoms. Frequent psychs and his propensity for no trump were the cornerstones for what area players nicknamed "Occoquan Standard."

There will never be another bridge player or friend like Lowell. His presence gave us joy and laughter, and his death diminished us all. It would be wonderful to see him bid 3NT just one more time.



Jack of Hearts

(Continued from page 4) Jack of Hearts

Schenker, David Milton, and David Fleischer (Open Swiss). Regional winners included Steve Reed and Amanda Carter, Dottie and Glenn Terrell with Betty and Mike Ladd, and Mary Ann Kral. It's nice to have so many successes to report.

Nationals are generally festive occasions and Philadelphia was no exception. However, there was a pall of sadness as well. For many of us, it was the last time we saw Tournament Director Millard Nachtwey. He showed up in Philly for a few days to see bridge friends for the last time. He returned home and died about two weeks later. Each of us knew Millard in our own way. While many are remembered for how they lived, what struck me most was the incredible dignity and courage with which he spent his final weeks. He leaves an enormous void. We wish him eternal peace.



Holiday Party - December 13, 2012

(Continued from page 1)

including eggnog (spiked and unspiked). **REMEMBER, no pork or shellfish can be brought into the temple, PLEASE!** If you are unable to bring an item (or forget), you will be asked to donate \$10.00 towards party expenses. Dinner will begin at 5:30 PM.

In addition to the holiday festivities, the NVBA Board will present two trophies at this party. One is the Sara Goodwin trophy, which goes to the NVBA member who has participated in the most NVBA events (Unit game and Sectionals) between the dates of December 1, 2011 and November 30, 2012. The other is the presentation of the Dave Murray award, which recognizes an NVBA player who demonstrates good bridge skills and great sportsmanship at the bridge table. Trophy presentations will take place at 6:30 PM, followed by the game at 7:00 PM.

Climbing the Ladder

New Junior Masters

Ethan Ableman
 Taher Azimi
 Joanne F Domson
 Amy L Elmore
 John E Henderson
 Donna Hickling
 Dr Michael R Kappel
 Jackson D Miller
 Arun K Mukherjee
 Marjorie H Odeen
 Elliot T Simon
 Steve Y Tai
 Yen Wu
 Jun Xu

New Club Masters

E Helen Brettell
 Patricia A Fitzgibbons
 Enrica M Frost
 Alfred C Groff
 Susan J Gruskiewicz
 Samir M Haddad
 Armanda Henderson
 Rozelin Prochaska
 Kumkum Ray
 Rose Marie Sanders
 Helen S Schumacher
 Nancy Tarlano
 Gayle Tomasetti

New Sectional Masters

Catherine S Bardsley
 Frants Lasse Becker
 Kenneth Cohn
 Craig Jennings
 Benjamin Chatfield
 Shirin N Farkhan

Judith E Hohman
 James M Mosley
 Harry Potter
 Jeffrey Schwartz



New Regional Masters

Warren L Beeton
 H Mark Blauer
 Joy R Brown
 Dr Michael E Canes
 Ann O Jennings
 Pat O Kibler
 Marina M Kotch
 Yoshiko Langer
 Hank L Lavender
 Richard F Padgett
 Donald R Smith

New NABC Masters

Wayne B Bardsley
 Yuen E De Anda
 Ed Brawn
 Lynne H Groff
 Bruce E Kasold
 Betty Ladd
 Ronald M Ozarka
 Charles R Skillern
 Joan McQuaid
 Ron Sutter

New Advanced NABC Master

Mike Ladd

New Life Masters

Joan Kindle
 Susan Klaber
 William M Pruiett
 Nancy Senger
 David M Soukup
 Mary Jo Swain
 William E Woodward

New Bronze LMs

Stephen J Colevas
 Louise Hayes
 William M Mendez Jr Dr
 Bahman Shahin
 Dr Dennis K Sponholtz
 Al V Stolpe

New Silver LMs

Ross A Bley
 David B Loken

New Gold LM

Lynda B Flanger
 Mae Mace
 Cdr Thomas Musso
 Kevin R O'Brien
 Annie H Schwartz

NVBA on the Internet: <http://www.nvba.org>

Hail and Farewell

We would like to welcome the following new members into our Unit:

Michael S Beyer
 Nancy Bleeker
 Gary J Connors
 Nancy L Dickson
 Pari Gorji
 Virginia Gray-Roddy
 Patricia M Greason
 Ellen K Haines
 William G Harris
 Daphne S Holmquist
 Bill Huneke
 Craig D Johnston
 Joan Kadonoff
 Dr John F Karl
 Cynthia Larre
 Marjorie Lewis
 Lucinda P Mann
 Frederic Osgood
 John Peterson
 M Sheila Rabaut
 Vera C Roseman
 Stuart Scott
 Jeff Traeger
 Duncan Wainwright
 Jun Xu

We are sorry to note the passing of eight of our members:

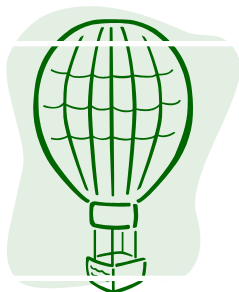
John D Austin Jr
 Phyllis J Dean-Simpson
 Larry S Galvin
 John L Hambric
 Mary Frances Howell
 Teri Shinder
 Lowell Sawyer
 Lu M Wright

We would like to welcome the following transfers into our Unit:

Kenneth Andino
 Sarah N Beckman
 Evelyn B Conover
 Nancy J Griewahn
 Robert F Leach
 Betty C Long
 Sajid Masood
 Robert M Poriss
 Andrew J Rowberg
 Colin Schloss
 Sharon Steen
 Richard A Thomas -
 welcome back!

We give our regards to the following people who have transferred out of our Unit:

John R Betz, Jr
 Judy Cody
 James A Dailey
 Vicki L Dailey
 Jill D Duvall
 Stephen M Goldstein
 Jan Harrington
 Anthony W Hawks
 Jackie A Hillen
 Pat D Inman
 Dr Susanne M Jung
 James A Leavengood
 Sajid Masood
 Ray H Morgan
 Virginia A Morgan
 Carl J Peterson
 Linda R Peterson
 Ashley B Rahn
 Steve M Schlosser
 Elizabeth J Settle
 Lois A Simms
 William D Snyder
 Ron Sukoneck
 Marie W Tomlinson
 Mitchell D Weisberg



Parade of Winners

BETHESDA, MD REGIONAL July 2-8, 2012

Mon Aft Edu Found Open Prs (54 Pairs)

2 Samir Haddad - Laurice Malouf

Mon Aft Charity 0-300 Prs (39 Pairs)

2 2 1 Ramsey Bordcosh - Gretta Bordcosh

2 Ann Jennings - Craig Jennings

Mon Aft 0-50 Prs (10 Pairs)

1 Carol Kuehl - Barbara Walton

Mon Educ Found Open Swiss (22 Teams)

1 Ed Lewis III - Ed Lewis - Bill Pettis - Ann Lindley

Mon Eve Charity Side Game (51 Pairs)

1 1 Onorica Luculescu - Alina Galaszewska

Mon Eve 0-300 Prs (32 Pairs)

2 Joan Axilbund - Mary Lou McMorrow

Mon Eve KO Bkt 2 (12 Teams)

1 Mike Frosch - Sorina Negulescu - Lynda Flanger - Kevin O'Brien

Mon Eve KO Bkt 3 (14 Teams)

2 Thomas Jennings - Stephen Colevas - Joyce Wiley - Georgette Weiss

Tues AM Side Game (16 Pairs)

1 1 1 David Soukup - Hakan Berk

Tues AM 0-300 Prs (22 Pairs)

1 Ann Jennings - Craig Jennings
2 Alice Ling - Toni Sandler

Tues AM 0-50 Prs (20 Pairs)

2 Yaeko Perera - Julie Marquette

Tues Daylight Open Pairs (56 Pairs)

1 John Hamilton - Elaine Sellman
2 Barbara Hodges - Joe Leighton

Tues Aft Side Game (26 Pairs)

2 Don Geerhart - Ed Lewis

Tues Aft 0-300 Prs (20 Pairs)

1/2 1 1 Ann Jennings - Craig Jennings
2 Jack Schiff - Michael Kappel

Tues 750/300 Gold Rush Prs (78 Pairs)

1 1 Robert Hollohan - William Woodward

Tues Eve Side Game (30 Pairs)

1 Richard Clark - Richard Ott

Tues Eve BAM (12 Teams)

1/2 1/2 Matthew Lahut - Sylvia Shi - Alexander Prairie - John Miller
2 Margaret Whilden - Richard Wedgewood - Calvin Konner - Jenny Shaefer

Tues Eve 0-300 Prs (21 Pairs)

1 Pat Kibler - Donald Smith
2 1 Fadi Eidi - Ramsey Bordcosh
2 Arun Mukherjee - Steve Rainey

(Continued on page 11)

(Continued from page 10)

Tues - Wed AM Compact KO (14 Teams)

- 2 Jerry Nolte - Elizabeth Nolte - Gil Krawitz - Willis Paley Hume

Tues - Wed KO Bkt 1 (9 Teams)

- 1 Paul Benedict - Sumner Steinfeldt - Kent Hartman - Lynn Jones

Tues - Wed KO Bkt 2 (16 Teams)

- 1 Debnarayan Dhar - Dharendra Ghosh - Tom Musso - Kathrine Loh

Tues - Wed KO Bkt 3 (9 Teams)

- 1 Michael Osborn - Joe Hertz - Karen Hill - Eric Poskanzer

Wed AM Side Game (20 Pairs)

- 2 Jeanie Ginsburg - Gordon Ginsburg
2 Jeremy Billones - Stephen Colevas

Wed AM 0-300 Prs (16 Pairs)

- 1 1 1 Ann Jennings - Craig Jennings
2/3 2/3 2 Sharon Perryman - Richard Padgett

Wed A/X Open Prs (73 Pairs)

- 2 Stan Schenker - David Milton
2 W Haskitt - Daniel Suty

Wed Gold Rush 300/750 Prs (86 Pairs)

- 1 1 Mike Ladd - Betty Ladd
2 Thomas Herzog - Terry Mitchell

Wed Aft Side Game (46 Pairs)

- 2 Jerry Nolte - Elizabeth Nolte

Wed Aft 0-300 Prs (36 Pairs)

- 2 2 Ann Jennings - Craig Jennings
2 Lynn Frankenfield - Debby Bailine

Wed Fast Prs (36 Pairs)

- 1 Deborah Hoveland - William Young

Wed Eve Swiss (26 Teams)

- 2 1 1 Matthew Lahut - Alexander Prairie - David Soukup - Hakan Berk

Wed Eve Side Game (24 Pairs)

- 2 2 Martha Bley - Ross Bley
2 Onorica Luculescu - Alina Galaszewska

Wed-Thurs Comp KO Bkt 1 (9 Teams)

- 1 Ruth Potter - Huub Bertens - Jim Jacobson - Jeff Roman

James Monroe KO Bkt 3 (10 Teams)

- 2 Neil Selvin - Howard Grunin - Kellen Leister - Paul Setzer

Thurs-Fri AM Compact KO Bkt 2 (9 Teams)

- 2 Barry Fratkin - Winifred Fratkin - Ronald Friedman - Brigette Friedman

Thurs AM 0-300 Prs (18 Pairs)

- 2 2 2 Ann Jennings - Craig Jennings

Thurs Flt A/X Swiss (26 Teams)

- 1 David Soukup - Alexander Prairie - Mark Chen - Hakan Berk
2 Alan Schwartz - Annie Schwartz - Judy Fox - James Fox

Thurs Flt B Swiss Bkt 2 (8 Teams)

- 1 Jose Cortina - Steve Bunning - Estelle Bogart - Alan Gross

(Continued on page 12)

*(Continued from page 11)***Thurs Flt B Swiss Bkt 4 (8 Teams)**

2/3 Linda Mathias - Eva Klivington -
Marilyn Mendelson - Paul Stygar
2/3 Aaron Navarro - Susan Klaber -
Tobi Bear - Howard Bender

Thurs Flt B Swiss Bkt 5 (8 Teams)

2 James Gerding - Sidney Graves -
Virginia Gibbons - Jay Simon

Thurs Flt B Swiss Bkt 7 (14 Teams)

2 Barbara Sadick - Sally Schlein -
Phyllis Hendler - Katherine Culp

Thurs Daylight Open Prs (62 Pairs)

2 Bruce Houston - Kenneth Davis
2 Timothy Smith - Jennifer Nisenoff

Thurs Aft 0-300 Prs (26 Pairs)

2 2 Gail Harrison - Brian Brunsvold
1 Susan Gruskiewicz - Patricia Fitz-
gibbons
2 Sharon Perryman - Richard
Padgett

Thurs Aft 0-50 Prs (14 Pairs)

2 Linda Thomas - Donna Hickling

Thurs Aft Side Game (22 Pairs)

2 Lynne Groff - Sarah Raynor

Thurs Eve BAM (6 Teams)

1 David Butler - Sylvia Shi - Stephen
Drodge - John Miller
2 Jeff Roman - Huub Bertens - Ruth
Potter - Jim Jacobson
1/3 Barbara Pepelko - William Pe-
pelko - Taraneh Shahin - Bahman Sha-
hin

1/3 Lynne Beresford - Ruth Woods -
Eleanor Schwartz - Ann Seeboth
1/3 William Pruiett - Mary Jo Swain -
Yvonne Markell - Sheryl McEwan

Thurs Eve 0-300 Prs (19 Pairs)

11 1 Pat Kibler - Donald Smith

Thurs Eve 0-50 Prs (8 Pairs)

1 Mignon Williams - Bill Huneke
2 1 Jenneke Fijn Van Draat - Wil-
liam McLeese
2 1 Peter Town - Elliot Simon

Fri-Sat AM Comp KO Bkt 1 (9 Teams)

1 Kenneth Hopke - John Hamilton -
Priscilla Krueger - Robert Krue-
ger

Fri AM Side Game (18 Pairs)

2 2 Jeanie Ginsburg - Gordon
Ginsburg

Fri Daylight Open Pairs (75 Pairs)

2 Alexander Prairie - Mark Chen

Fri 300/750 Gold Rush Pairs (64 Pairs)

1 Joan Kindle - Dennis Sponholtz
2 1 George Caley - Anne Harrington
2/3 Dottie Terrell - Glenn Terrell
2/3 Michael Canes - Neal Cooper

Fri Aft Side Game (20 Pairs)

2 2 1 Gladys Kehnemui - Nazan Kirdar
2 Elizabeth Settle - Larry Settle

Fri Aft 0-300 Pairs (22 Pairs)

2 David Lindley - Kathleen LaMarre

(Continued on page 13)

*(Continued from page 12)***Fri Aft 0-50 Prs (14 Pairs)**

- 2 Betsy Rock - Patti Cooksey

Fri A/X Pairs (36 Pairs)

- 1 Edwin Lewis III - Ed Lewis
2 1 Daniel Suty - W Haskitt

Fri Eve Swiss (26 Teams)

- 2 John Gauss - Carolyn Baird - Julia Brown - Bernice Hacke

Fri Eve Bracketed Pairs/Teams (18 Pairs)

- 1 Catherine Bardsley - Maryellen Leister - Ken Kimball - Marsha Ann Brown
2/3 Renata Le Jeune - Joia Hertz - Stephen Nagy - Eva Vorndran

Fri-Sat KO Bkt 1 (12 Teams)

- 1 Ruth Potter - Jeff Roman - Huub Bertens - Jim Jacobson

Fri-Sat KO Bkt 2 (13 Teams)

- 1 Tom Musso - Kathy Paramore - Ellen Cherniavsky - Ralph Hoffman - Barbara Ames

Fri-Sat KO Bkt 3 (16 Teams)

- 2 Neil Selvin - Howard Grunin - Alfred Caponiti - John Lowe III

Fri-Sat KO Bkt 4 (16 Teams)

- 2 William Pruiett - Mary Jo Swain - Yvonne Markell - Jan Rusu

Sat AM 0-300 Prs (14 Pairs)

- 2/3 1 Robert Hollohan - William Hohe
2 Eva Vorndran - John Weiler
1 Eleanor Linde - Toni Sandler

Sat AM 0-50 Prs (8 Pairs)

- 2/3 2/3 David Butow - Barbara Butow

Sat A/X Pairs (48 Pairs)

- 1 David Milton - Stan Schenker
2 Deborah Hoveland - William Young

Sat Daylight Prs (55 Pairs)

- 1 Douglas Fox - James Sandefur

Sat Gold Rush 300/750 Prs (56 Pairs)

- 1 1 Mike Ladd - Betty Ladd

Sat Aft 0-300 Prs (22 Pairs)

- 1 1 Kellen Leister - Wayne Bardsley

Sat Aft 0-50 Prs (10 Pairs)

- 1 1 Linda Thomas - Donna Hickling
2 Bruce Diamond - Karen Mabie

Sat Eve BAM (5 Teams)

- 1 Walt Walvick - Kathie Walvick - Mike Cappelletti Sr - Susan Green

Sat Eve Side Game (14 Pairs)

- 2 John S. Mason - Arnold Kritz

Sat Eve 0-300 Swiss (4 Teams)

- 1 Deanna Shuman - Lawrence Shuman - Sandra True - Victoria True

Sat-Sun KO Bkt 1 (12 Teams)

- 2 Robert Hopkins Jr - Joan Lewis - Barry Falgout - Rusty Krauss

Sat-Sun KO Bkt 2 (14 Teams)

- 1 Steve Reed - Amanda Carter - Dennis Schwanz - Susan Miskura
2 Stephen Montague - Ron Ozarka - Barbara Hodges - Joe Leighton

(Continued on page 14)

*(Continued from page 13)***Sun A/X Swiss (36 Teams)**

- 2 Ron Kral - Jay Kelkar - Shuba Dey
- William Young

Sun B Swiss Bracket 1 (8 Teams)

- 1 David Loken - John Carlson -
Marilyn Carlson - Kamel Tabbara
2 Norma Pierzchala - Wesley Jones
- Alan Breed - Robert Walsh

Sun B Swiss Bracket 3 (8 Teams)

- 1 Al Stolpe - Julia Brown - Neal
McKinney - Thomas Jennings

Sun B Swiss Bracket 4 (8 Teams)

- 2 Howard Grunin - Eva Klivington -
James Wisman - David Goldberg

Sun B Swiss Bracket 5 (8 Teams)

- 2 Edward Stoker - Donna Stoker -
Deborah Pirkle - Carol Wilson

Sun B Swiss Bracket 6 (8 Teams)

- 1 David Soukup - Hakan Berk -
Murat Berk - Peter Van Zijl
2 Norman Mitchell - Terry Vann -
Art Hartstein - David Montague

Sun B Swiss Bracket 8 (8 Teams)

- 1 John Gauss - Carolyn Baird -
Mike Ladd - Betty Ladd
2 Alan Tapper - Joel Goldberg -
Kenneth Cohn - Robert Dorosin

Sun B Swiss Bracket 9 (9 Teams)

- 1/2 Glenn Terrell - Dottie Terrell -
Richard Padgett - Sharon Perryman
1/2 Lynne Groff - Alfred Groff -
Wayne Bardsley - Catherine Bardsley

Sun AM Side Game (22 Pairs)

- 2/3 John Goon - Lyudmila Shuller
2/3 Linda Thomas - Donna Hickling
Sun Aft Side Game (27 Pairs)
2 1 Ramsey Bordcosh - Gretta
Bordcosh

**HUNT VALLEY REGIONAL
August 13-19, 2012****Mon Aft Open Prs (54 Pairs)**

- 2 Sumner Steinfeldt - Ken Davis
1 1 Jan Baisden - Alan Munro

**Mon. Educ Found Open Swiss
(16 Teams)**

- 2 Julia Brown - Neal McKinney -
Michael Ford - Peter Salmon-Cox

Mon Eve Charity Prs (52 Pairs)

- 1 1 1 Onorica Luculescu - Alina
Galaszewska

Tues AM Side Game (9 Pairs)

- 1 Lynda Flanger - Marie Burgess-
Strauss

Tues Eve Swiss (29 Teams)

- 1/2 Stan Schenker - Mark Laken -
Harry Gellis - Ed Lazarus

Tues - Wed KO Bkt 5 (16 Teams)

- 1 Howard Friedel - Evelyn Krohn -
Alan Munro - Bill Murphy

(Continued on page 15)

(Continued from page 14)

- 2 Louise Hayes - Dick Verdow - Jean Verdow - Penelope Paddock

Wed 300/750 Gold Rush Prs (97 Pairs)

- 2 Ann Atcheson - M. David Jackson

Wed Aft Side Game (34 Pairs)

- 2 2 James Hill Jr - Susan Slattery

Wed Eve BAM (26 Teams)

2/3 Lynda Flanger - Helene Cooper - Susan Slattery - James Hill Jr

- 2 Mary Ann Kral - Linda Burton - William Gurley - Marvin Raines

Wed Eve 0-300 Prs (26 Pairs)

- 1 Wayne Bardsley - William Glen
2 John Schoeberlein - Juliet Schoeberlein

Wed-Thurs AM Comp KO Bkt 3 (16 Teams)

- 1 Norman Mitchell - Terry Vann - David Montague - Art Hartstein
2 Paul Setzer - Donna Setzer - William Glen - Ruth Glen

Thurs Flt B Swiss Bkt 1 (8 Teams)

1/2 Mike Frosch - Kevin O'Brien - Lynda Flanger - Francesco Parisi-Presicce

Thurs Flt B Swiss Bkt 2 (8 Teams)

- 1 Howard Grunin - David Loken - John Lowe III - Kathrine Loh
2 Daniel Feldman - Amy Bloom -

David Traub - Carol Traub

Thurs Flt B Swiss Bkt 3 (8 Teams)

2/3 Steve Reed - Amanda Carter - Frank Evangelista - Neil Evangelista

Thurs Flt B Swiss Bkt 5 (8 Teams)

- 1 Kenneth Hopke - John Hamilton - Priscilla Krueger - Robert Krueger

Thurs Flt B Swiss Bkt 6 (8 Teams)

- 1 Jerry Nolte - Elizabeth Nolte - Willis Paley Hume - Paul Stygar

Thurs-Fri Comp KO Bkt 1 (9 Teams)

- 2 Ron Kral - Jay Chertow - Leonard Ellis - Bob Boyd

Thurs-Fri Comp KO Bkt 2 (12 Teams)

- 1 William Pepelko - Barbara Pepelko - Janet Henrichsen - Lee Gunning

Thurs-Fri Comp KO Bkt 3 (12 Teams)

- 1 James Gerding - Sidney Graves - Stephen Colevas - Thomas Jennings

Thurs AM Side Game (36 Pairs)

- 1 Mark Tonnesen - Ken Davis
2 1 Howard Grunin - John Lowe III

Thurs AM 0-300 Prs (32 Pairs)

- 2 Alan Tapper - Joel Goldberg

Thurs Open Prs (40 Pairs)*(Continued on page 16)*

(Continued from page 15)

1 1 George Parkins - Hank Lavender

Thurs Senior Pairs (68 Pairs)

1 Pamela Granovetter - Peter Lesnik

Thurs Aft 0-300 Prs (24 Pairs)

1 Wayne Bardsley - Catherine Bardsley

Thurs Eve Swiss (8 Teams)

1 Ron Kral - Ken Davis - Bob Boyd - Mark Tonnesen

Thurs Eve 0-300 Prs (19 Pairs)

1 Pat Kibler - Donald Smith

Fri AM 0-300 Prs (18 Pairs)

2 Joan O'Neill - Phyllis Schultze

Fri A/X Pairs (44 Pairs)

2 Mike Cappelletti Sr - David Hoffner

2 Stephen Drodge - Sylvia Shi

Fri 300/750 Gold Rush Pairs (66 Pairs)

1 Kellen Leister - Paul Setzer

2 George Parkins - Hank Lavender

Fri Aft Side Game (24 Pairs)

2 Saadollah Ghaussy - Benazir Ghaussy

Fri Eve BAM (20 Teams)

1 Nicholas France - Linda Dick - Jim Dick - Victoria Gregory

Fri Eve Side Game (31 Pairs)

2 Saadollah Ghaussy - Benazir Ghaussy

Fri-Sat AM Comp KO Bkt 3 (12 Teams)

2 M. David Jackson - Sheryl McEwan - Margie Mastran - Ann Atcheson

Fri-Sat KO Bkt 5 (16 Teams)

1 Howard Grunin - James Wisman - Howard Tash - Martin Reed

Fri-Sat KO Bkt 6 (16 Teams)

1 Jerry Nolte - Elizabeth Nolte - Michael Osborn - Joe Hertz

Sat AM Swiss (22 Teams)

2/3 Michael Anesko - Barbara Mateer - Betsy Eliot - Helene Cooper

2 Alan Munro - Sidney Graves - Don Schwikert - Pamela Schwikert

Sat AM Side Game (16 Pairs)

2 2 John Lowe III - Howard Grunin

Sat AM 0-300 Prs (18 Pairs)

1 Pat Kibler - Donald Smith

(Continued on page 17)

(Continued from page 16)

- 2 Wayne Bardsley - Catherine
Bardsley

Sat A/X Pairs (48 Pairs)

- 2 Monique Smith - Merrill Hirsh

Sat Senior Pairs (66 Pairs)

- 2 1 Chloe Johnson - Wanda Worsham

**Sat 300/750 Gold Rush Pairs
(56 Pairs)**

- 1 William Mendez Jr - Michael Gold-
man
2 Georgette Weiss - Joyce Wiley
1 Glenn Terrell - Dottie Terrell

Sat Aft Side Game (36 Pairs)

- 1 1 Jim Dick - Ralph Lloyd

Sat Eve Swiss (22 Teams)

- 1/3 David Grabiner - Suzanne Abrams
- Lynda Flanger - Les Powell

Sat Eve Side Game (19 Pairs)

- 2 Steve Reed - Kiyomi Shiba

Sat-Sun KO Bkt 1 (12 Teams)

- 2 Arnie Frankel - Jerry Keller - Jim
Wakefield - Helene Bauman

Sat-Sun KO Bkt 2 (16 Teams)

- 1 David Rodney - Avril Rodney -
Margot Hennings - Cecily Kohler

Sat-Sun KO Bkt 3 (11 Teams)

- 1 Alan Munro - Sidney Graves - Pam-
ela Schwikert -
Don Schwikert

Sun A/X Swiss (39 Teams)

- 2 Ron Kral - Bob Boyd - William
Young - Jay Kelkar

Sat Flt B Swiss Bkt 2 (8 Teams)

- 1 Eric Poskanzer - Kevin O'Brien -
Lynda Flanger - Francesco
Parisi-Presicce

Sat Flt B Swiss Bkt 3 (8 Teams)

- 1 Jim Dick - Linda Dick - Mark Lavine
- Ralph Lloyd
2 Steve Reed - Amanda Carter -
Carole Banks - Kiyomi Shiba

Sat Flt B Swiss Bkt 4 (8 Teams)

- 1 Eugene Fisher - Adrienne Fisher -
Amy Bloom - John Mattioli
2 Leonard Ellis - Jay Cherlow - Ned
Griffith - Albert Lauber

Sat Flt B Swiss Bkt 6 (8 Teams)

- 2 Martin Deneroff - Valerie Vaughan
- Eva Klivington - Iris Williams

Sat Flt B Swiss Bkt 9 (8 Teams)

- 1 Alan Tapper - Joel Goldberg -
Kenneth Cohn - Robert Dorosin
2 Paul Setzer - Donna Setzer - Ruth
Glen - William Glen

*(Continued from page 17)***Swiss Bkt 10 (8 Teams)**

- 1 Christine Matus - Pieter Vanbennekom - L Irish Murphy - Robert Whedon
- 2 Rochelle Hilton - Rachelle Sladoff - Lee Tanen - Naomi Fisch

Sun AM Side Game (18 Pairs)

- 1 Marilyn Armon - Jane Farthing

**NVBA SEPTEMBER
SENSATIONS SECTIONAL
September 6-9, 2012**

Thurs AM Open Pairs (36 Pairs)

- 1 Mickie Hughes-Andre L'Heureux
- 2 Ken Davis - Steve Schatzow
- 1 1 Rolf Valtin - Robert Gemmill
- 2 Tony Robson - Dave Tonnesen
- 2 Georgette Weiss - Joyce Wiley

Thurs AM 299er Pairs (6 Pairs)

- 1 Toni Sandler - Eleanor Linde
- 2 Ron Sutter - Yuen de Anda

Thurs Eve A/X Pairs (72 Pairs)

- 1 Anne Schwartz - Alan Schwartz

Thurs Eve B/C Pairs (56 Pairs)

- 1 1 Virginia Gibbons - Kim Sanders
- 2 Eric Poskanzer - Jay Simon

Thurs 199er Pairs @ NVBA (20 Pairs)

- 1 1 Eileen Street - David Street
- 2 Judith Curry - Blair Curry
- 2 1 James Connor - Duncan

Wainwright

- 2 Eleanor Linde - Alice Ling

Fri Aft A/X Pairs (34 Pairs)

- 1 Ed Lewis - Don Geerhart
- 2 Robert Finkelstein - Carl Noller

Fri Aft B/C Pairs (32 Pairs)

- 1 1 Ann Atcheson - Sheryl McEwan
- 2 Al Sitterson - Helene Cooper
- 2 Robert Dorosin - Kenneth Cohn

Fri Aft 299er Pairs (44 Pairs)

- 1 Kellen Leister - Maryellen Leister
- 2 1 1 John Schoeberlein - Juliet Schoeberlein
- 2 Eva Vorndran - John Weiler
- 2 Yasmin Jiwa - Maree Webster

Fri Aft 49er Pairs (12 Pairs)

- 1 1 Jeff Traeger - Don McKenzie
- 2 Hilda Sheffer - Harry Davies
- 2 Diana Jarrett - Jon Guyton

Fri Eve Triple Nickel Swiss (23 Teams)

- 1 Bob Boyd - Margot Hennings - Shawn Stringer - Bob Hartman
- 2 1 Irv Kipnis - Margie Coccodrilli - Sorina Negulescu - Terry Jones
- 1 Beresford - Eleanor Schwartz - Cathy McGarrigan - Sherry Griffin
- 2 Harry Potter - James Mosley - Adam Winsler - Gary Hinson

Fri Eve 299er Pairs (14 Pairs)

- 1 1 Patricia Cook - John Cook
- 2 Ollie Thomas - Julie Thomas
- 2 Ann Jennings - Craig Jennings

(Continued on page 19)

*(Continued from page 18)***Sat AM B/C Pairs (32 Pairs)**

1 1 David Soukup - Robert Hartman

Sat AM 299er Pairs (28 Pairs)

1 Darleen Cors - Kenneth Kraus
 2 1 Katherine Culp - Jean Feighery
 2 Sharon Perryman - Richard Padgett
 1 Juliet Schoeberlein - John Schoeberlein
 2 David Benson - Jill Benson

Sat AM 49er Pairs (14 Pairs)

1 1 1 Claire Agoglia - Patricia Schmidle
 2 James Eaton - Joseph Faudale
 2 Karen Vence - Robert Vence
 2 Joan Rineberg - Charles Becker

Sat A/X Pairs (32 Pairs)

1 1 Mel Yudkin - John Christensen

Sat Aft B/C Pairs (37 Pairs)

1 Ed Brawn - Susan Brawn
 2 Jean Valentine - Helene Cooper
 1 Louise Hayes - Penelope Paddock
 2 Anthony Hawks - Terence McCarthy

Sat Aft Side Game (16 Pairs)

1 Jean Levin - Kamal Tabbara
 2 Nancy Lea Ross - Paul Robb

Sat Aft 299er Pairs (38 Pairs)

1 1 Elinor Stolar - Linda Thomas
 2/3 2/3 Marguerite Salah - Gretta Bordcosh
 2/3 2/3 1 Margaret Cooke - Peter Isard
 2 James Connor - Amy Elmore

Sat Aft 49er Pairs (18 Pairs)

1 James Eaton - Joseph Faudale
 2 Arthur Ditzel - Andrea Fritz
 2 1 Claire Agoglia - Patricia Schmidle
 2 Andrea Field - Jo Ann Ruffin

Sat Eve B/C/D Pairs (16 Pairs)

1 Mary Peters - Thomas Peters
 2 1 Louise Hayes - Penelope Paddock
 2 1 Jane Dolkart - Judy Retchin
 2 Ollie Thomas - Julie Thomas

Sun A/X Swiss (18 Teams)

1/2 Fred King - Alan Schwartz - Robert Bell - Ai-Tai Lo

Sun Flt B Bkt 1 (8 Teams)

1 Dennis Schwanz - Susan Miskura - Martha Mangano - Dave Tonnesen
 2 Betsy Eliot - Louise Sellers - Lenore Ward - Yvonne Markell

Sun Flt B Bkt 2 (8 Teams)

1 John McCormick - Gabriel Cornett - Larry Wallace - John Mattioli

Sun Flt B Bkt 3 (13 Teams)

2 Alan Munro - Bill Murphy - William Nanna - W Morgan

Sun AM 299er Swiss (17 Teams)

1 Harry Potter - James Mosley - Adam Winsler - Gary Hinson

NVBA Club Websites

Club	Game	Website/Contact Info
Carole Grob	KOCH - Monday 10:00 AM	http://mybridgeclub.com
Terry Jones	Falls Church Bridge Club - Saturday, 7:00 p.m.	http:// www.fallschurchbridgeclub.com
Candy and Marshall Kuschner	KOCH - Tuesday, 10:00 AM Reston - Wednesday, 7:30 PM	http://clubresults.acbl.org/ getClubs.php
Bernie Oetjen	KOCH - Monday, 7:00 PM KOCH - Saturday, 1:00 PM	http://clubresults.acbl.org/ getClubs.php
Norma Pierzchala	Norma's Game - KOCH - Thursday, 10:00 AM Norma's Game - KOCH - Saturday, 9:00 AM	http://clubresults.acbl.org/ getClubs.php
Gene Schuyler	JCC of No. VA— Tuesday, 7:15 PM Arlington DBC - Wednesday, 10:00 AM Friday Bridge - Friday, 10:00 AM	http://www.geneschuyler.com/
Louise Sellers	JCC of No. VA - Wednes- day, 11:00 AM Vienna DBC - Thursday, 10:30 AM	http://clubresults.acbl.org/ getClubs.php
Lenore Ward	Cascade Seniors - Monday, 11:00 AM Thursday, 1:00 PM	http://clubresults.acbl.org/ getClubs.php
Marilyn Golias	Bridge Club of Northern Virginia - Sunday, 2:00 PM	Various locations in the Northern Virginia area; Tel: 703-629-8932; Email: double7nt@aol.com
Mike Zane	Beth El - Sunday, 1:00 PM Montebello - Monday, 7:00 PM	

Gold Points! Red Points! Green Points!

2012-2013 North American Pairs

The **District 6 Final** for all flights will be held on the weekend of October 13-14, 2012. The Open Flight and 0-2000 Flight Finals will be 4-session events, with roughly half the field qualifying for the second day. The NLM Final will be a 2-session event held Sunday, October 14. **All flights will be played in the DC area** at Newport Mill Middle School, 11311 Newport Mill Road, Kensington, MD. Saturday games are 12:00 and TBA. Sunday games are 11:00 and TBA

All players who play in the District Final must have qualified at the club level and be bona fide members of District 6. There will be no exceptions. Flight eligibility is determined by your master point holding on June 1, 2012.

Pre-registration is required in order to play in the District Finals; although unregistered players will be accommodated if possible. To pre-register, send a **check made payable to District 6 in the amount of \$50.00**, to cover 2 sessions of the event, to: Barbara Doran, 1107 Dale Drive, Silver Spring, MD 20910-1607. Please include the name and ACBL number for each player. You and your partner must pre-register as a pair and not as individuals. **Pairs must pre-register by October 4, 2012.**

Three pairs in each flight will qualify for the National Finals, to be held at the Spring 2013 NABC in St. Louis, MO.

Qualifiers who play in the National Final will be subsidized (to various extents) for travel expenses and hotel rooms by the ACBL and/or District 6. Membership dues or Life Master service fee must be current and continuous from the start of the District Final to the completion of the North American Pairs Final at the NABC in order to play in the National Final.

For more information and directions to the playing site, visit the District 6 web site at <http://www.districtsix.org> or contact Barbara Doran by phone at (301) 608-0347 or by email to barbd@starpower.net.

Directions to NAP District Final Site

Newport Mill Middle School -- 11311 Newport Mill Road, Kensington MD 20895

Take the Beltway (I-495) to the Georgia Avenue Exit (31A) towards Wheaton, after about 1.8 miles take the slight left onto Viers Mill Road, then turn left on to Newport Mill Road. The school will be on your left about .3 miles in.

♠ Fairfax, VA ♠ OCTOBER 25-28, 2012 ♠

Fall
into
Fun!

NVBA FALL SECTIONAL TOURNAMENT

The Arlington/Fairfax Elks Lodge #2188
8421 Arlington Boulevard,
Fairfax, VA; 703-560-2213

THURSDAY, OCTOBER 25

STRATIFIED OPEN PAIRS (2000+/2000/750) & 299ER PAIRS (300/200/100)10:00 a.m.
Norma's Game: K of C Hall, 5115 Little Falls Rd., Arlington, VA, 703-892-1292
Evening games at: NVBA: Beth El Hebrew Congregation, 3830 Seminary Road, Alexandria, VA or
WBL: Ohr Kodesh Congregation, 8300 Meadowbrook Ln, Chevy Chase, MD — E-W Hwy 410 E, left
Meadowbrook, left Freeman, lot on left.—No outside food. **NVBA (Beth El) WBL**
Intermediate/Newcomer Lecture6:30 p.m.
STRATAFLIGHTED OPEN PAIRS (A/X-3000+/3000; B/C-2000/750) ...7:00 p.m.7:30 p.m.
NVBA 199ER PAIRS (200/100/50/20); WBL NLM PAIRS (NLM/100/50) ..7:00 p.m.7:30 p.m.

...REST OF TOURNAMENT AT ELKS LODGE..

FRIDAY, OCTOBER 26

Intermediate/Newcomer Lecture1:15 p.m.
STRATAFLIGHTED A/X (3000+/3000) & B/C (2000/750) PAIRS 22 p.m.
299ER PAIRS (300/200/100) & 49ER PAIRS (50/20/5)2 p.m.
TRIPLE NICKEL SWISS—5 rounds, 5 boards, 5 minutes a board ..7:30 p.m.
299ER PAIRS (300/200/100)7:30 p.m.

SATURDAY, OCTOBER 27

STRATAFLIGHTED A/X (3000+/3000) & B/C (2000/750) PAIRS 9:30 a.m.
299ER PAIRS (300/200/100) & 49ER PAIRS (50/20)9:30 a.m.
NEWCOMER PAIRS (0-5)9:30 a.m.
Intermediate/Newcomer Lecture1:15 p.m.
STRATAFLIGHTED A/X (3000+/3000) & B/C (2000/750) PAIRS ..2 p.m.
299ER PAIRS (300/200/100) and 49ER PAIRS (50/20/5)2 p.m.
STRATIFIED OPEN PAIRS (2000+/2000/750)7:30 p.m.
299ER PAIRS (300/200/100)7:30 p.m.

SUNDAY, OCTOBER 28

FLIGHTS A/X (5000+/5000) SWISS TEAMS11:00 a.m.
& BRACKETED FLIGHT B TEAMS (no single player >2000) ..11:00 a.m.
B Teams Bracketed by Total Team Masterpoints: three overall places in each.
Both Team Games are 2-session events, with a brief break—food available on-site.
299ER SWISS TEAMS (300/200/100) (Single session)11:00 a.m.
49ER SWISS TEAMS (50/20/5) (Single session)11:00 a.m.
299ER SWISS TEAMS (300/200/100) (Single session)3:15 p.m.

DIRECTIONS. From Route 50/Arlington Boulevard heading west from DC and Arlington AND from Route 495/Beltway: Continue on/Take Route 50 West about one mile outside the Beltway, and turn left at Javier Road (the second stoplight after the intersection of 50 and 495). Take an immediate right onto the access road that runs parallel to Route 50. The Elks Lodge will be two buildings down on your left—parking on the side and in the rear. From Fairfax, heading East on Route 50: Pass the intersection of Route 50 and Prosperity Avenue—the Prosperity Medical Center will be on your right. Between the first and second lights after Prosperity, turn right into the access road that runs parallel to Route 50 and look for the Elks Lodge immediately to your right—parking on the far side of the building and in the rear.

Plenty of free parking! On-site snack bar plus lots of free treats! Many great restaurants nearby!

Championship Events and a Full Schedule of 299er Events for Novice and Intermediate Players! Players with 0-5 Masterpoints play FREE in ALL games!

Tournament Chair

Margie Hennings,
703-560-0245

Partnership Chair

Mary Ann Kral,
703-608-6846

Mid-Chart Conventions permitted in all AX Events

Next NVBA Sectional Feb 7-10, '13 at Arlington/Fairfax Elks Lodge (Thurs at Beth El)

www.nvba.org

SILVER SPRING, MD: JANUARY 3-6, 2013

**51st Annual
~ PRESIDENTIAL TOURNAMENT ~**
at the **KENSINGTON TOWN HALL/ARMORY**
3710 Mitchell St, Kensington, MD - (except where noted)



**2013...
Cheers to a
New Year &
a New Deal!**

THURSDAY, JANUARY 3

- ♣ Stratified Open Pairs (unlim/1500/500) 11:15am
Rockville Duplicate Bridge Club, 301-503-3348 (Mark Lavine) NO ENTRY
St. James Episcopal Church, 11815 Seven Locks Rd., Rockville TILL 11AM
- ♦ Stratiflighted Open Pairs (A/X unlim/3000, B/C/D Separate 2000/1000/500)
(both sites); Stratified NLM Pairs (NLM/100/50) & 0-20 Pairs (Kensington
Armory only); Stratified 199er Pairs (Beth El only)
Beth El Congregation, 3830 Seminary Rd, Alexandria 7:00pm
Kensington Town Hall/Armory 7:30pm

FRIDAY, JANUARY 4

- ♣ *Stratiflighted A/X (unlim/3000) & B/C/D Pairs (2000/1000/500) 10:00am, 2:00pm
- ♦ **IMP Pairs** A/X (unlim/3000) 7:15pm ← **EARLIER START!**
It's the Friday night IMPs! With only one partner, it scores like a team game. To get your IMP score
on a board, we take your result and IMP it against each result at the other tables, then get the average.
- ♥ B/C/D Pairs (2000/1000/500) 7:15pm
- ♣ Intermediate/Novice Pairs (300/200/100/50/20) (single sessions) 10:00am, 2:00pm, 7:15pm
(will run if we have 3 or more tables)

Panel & Party Show **SATURDAY, JANUARY 5**
to Honor New Life Masters between sessions

- ♣ **Special! JENYARA/ACH!** Stratiflighted A/X (unlim/3000) or B/C/D Pairs (2000/1000/500) 11:00am
- ♦ Stratiflighted A/X (unlim/3000) or B/C/D Pairs (2000/1000/500) 4:00pm
- ♥ Intermediate/Novice Pairs (300/200/100) or Newcomer Pairs (50/20/5) (single sessions) . 11:00am, 4:00pm

SUNDAY, JANUARY 6

WBL Trophy Race Winners' Presentation

- ♣ **Bracketed Teams**, (2 session playthru w/short break) 11:00am & TBA
Check out this format! Each bracket of eight teams (by masterpoints) plays all of the other teams
in its bracket! The top bracket will hold an unlimited number of teams and will play a Swiss format.
Your team may choose to play up—but only into the top bracket.
- ♦ 300/100/50 Swiss Teams, VPs (single sessions) 11:00am, 3:00pm

♣ **Lots of Intermediate & Novice Events with Silver Points!** ♥

IN events: 0-5, 20, 50, 100, 200, 300; Stratification at Director's Discretion.

Famous Washington Hospitality includes snacks, drinks, & Friday & Sunday lunch
free of charge. Chair: **Ron Zucker**, 202-390-3443, ron@motherzucker.com. Volunteer Coordinator:
Barbara Summers, 301-598-5838, jimbarb1184@aol.com Hospitality: **Kitty Gottfried**, 301-587-3981,
kgtgfried@hotmail.com Partnerships: **Barbara Doran**, 301-608-0347, SectionalPartner@DistrictSix.org

*Stratiflighted if attendance warrants—otherwise combined into Stratified Pairs (unlim/2000/500)

Directions to the Kensington Town Hall/Armory: 495 Beltway Ext 33, Connecticut Avenue North (RL 185N—to Kensington). 1.5 miles, right at light—Knowles Ave. Ⓜ right at stop—Armory Ave. Ⓜ left at stop—to 3710 Mitchell St. & parking lot on right. Additional parking in nearby lots—see website maps.

Mid-chart allowed in all events except LVN

Northern Virginia Bridge Association

10015 Manor Place, Fairfax, VA 22032

2005-2006 Board of Directors

Mike Cappelletti – President
Ron Kral – Vice President
Lynda Flanger – Treasurer
Alan Dockerman – Secretary
Executive Directors
Betty Burse
Lynne Beresford
Leo Cardillo
Amanda Carter
Sheryl McEwen
Unit Game Chief Director – Gene Schuyler
Membership – Eric Poskanzer
Newsletter Editor – Lucy McCoy
Newsletter Production – Stan Schenker

The *NVBA Newsletter* is published four times a year by the Northern Virginia Bridge Association. If you need membership information or have a change of address to report, contact Eric Poskanzer at NY2VA@yahoo.com; for information/suggestions about newsletter content, contact Lucy McCoy at 703-848-2331 or newsletter@nvba.org. To receive the newsletter electronically, send an email request to RonKral@gmail.com.

Pre-Sorted Standard
U.S. Postage
PAID
Dulles, Virginia
Permit No. 056